

Phospho-PKC alpha (T497) Rabbit mAb

Catalog No: #60290



Package Size: #60290-1 50ul #60290-2 100ul

Orders: order@signalwayantibody.com
Support: tech@signalwayantibody.com

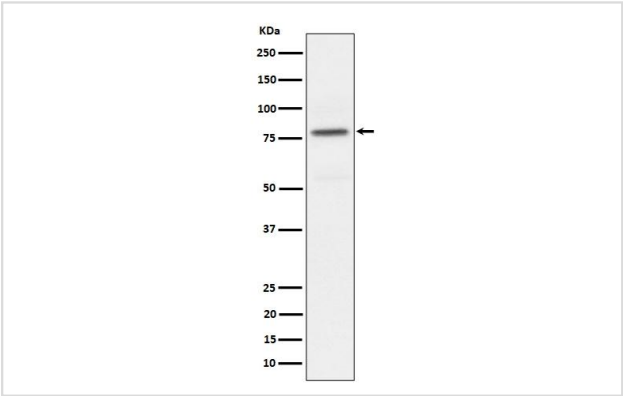
Description

Product Name	Phospho-PKC alpha (T497) Rabbit mAb
Host Species	Rabbit
Clonality	Monoclonal
Isotype	Rabbit IgG
Purification	Affinity-chromatography
Applications	WB,IHC
Species Reactivity	Human,Mouse,Rat
Immunogen Description	A synthesized peptide derived from human Phospho-PKC alpha (T497)
Uniprot	P17252
Calculated MW	77kDa
Formulation	Rabbit IgG in phosphate buffered saline , pH 7.4, 150mM NaCl, 0.02% sodium azide and 50% glycerol.
Storage	Store at +4°C short term. Store at -20°C long term. Avoid freeze / thaw cycle.

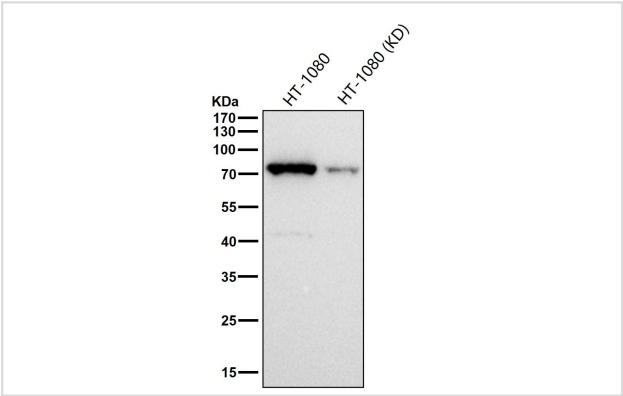
Application Details

WB 1:500~1:2000 IHC 1:50~1:200

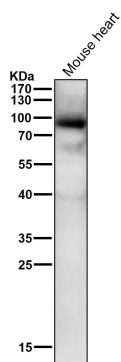
Images



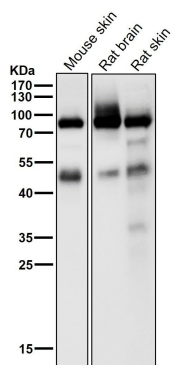
Western blot analysis of Phospho-PKC alpha (T497) expression in HeLa treated with Calyculin A cell lysate.



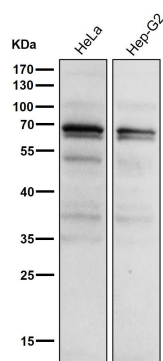
All lanes use the Antibody at 1:1K dilution for 1 hour at room temperature.



All lanes use the Antibody at 1:1K dilution for 1 hour at room temperature.



All lanes use the Antibody at 1:1K dilution for 1 hour at room temperature.



All lanes use the Antibody at 1:1K dilution for 1 hour at room temperature.

Background

PKC alpha is an AGC kinase of the PKC family. A classical PKC downstream of many mitogenic and receptors. Classical PKCs are calcium-dependent enzymes that are activated by phosphatidylserine, diacylglycerol and phorbol esters.

Note: This product is for in vitro research use only