

# MutS Protein Homolog 6(MSH6) (ABT-MSH6) mouse mAb (Ready to Use)

Catalog No: #58102

Orders: [order@signalwayantibody.com](mailto:order@signalwayantibody.com)Support: [tech@signalwayantibody.com](mailto:tech@signalwayantibody.com)

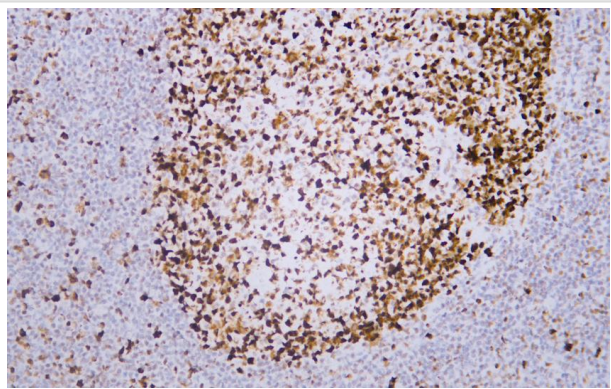
## Description

Product Name	MutS Protein Homolog 6(MSH6) (ABT-MSH6) mouse mAb (Ready to Use)
Brief Description	Mouse Monoclonal
Host Species	Mouse
Clonality	Monoclonal
Isotype	Mouse IgG1, Kappa
Purification	The antibody was affinity-purified from ascites by affinity-chromatography using specific immunogen.
Applications	IHC
Species Reactivity	Human
Specificity	The antibody can specifically recognize human MSH6 protein.
Immunogen Description	Synthesized peptide derived from human MutS Protein Homolog 6(MSH6)
Target Name	MSH6 GTBP
Uniprot	P52701
GeneID	2956
Formulation	The prediluted ready-to-use antibody is diluted in phosphate buffer saline containing stabilizing protein and 0.05% Proclin 300
Storage	2°C to 8°C/1 year

## Application Details

Ready to use for IHC

## Images



Human tonsil tissue was stained with Anti-MSH6 (ABT-MSH6) Antibody

Note: This product is for in vitro research use only