

## SEMG1 rabbit pAb

Catalog No: #49812

Package Size: #49812-1 50ul #49812-2 100ul

Orders: [order@signalwayantibody.com](mailto:order@signalwayantibody.com)Support: [tech@signalwayantibody.com](mailto:tech@signalwayantibody.com)

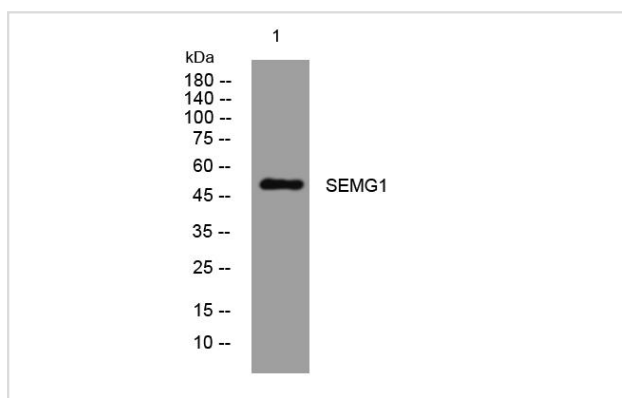
## Description

Product Name	SEMG1 rabbit pAb
Host Species	Rabbit
Clonality	Polyclonal
Isotype	IgG
Purification	The antibody was affinity-purified from rabbit antiserum by affinity-chromatography using epitope-specific immunogen.
Applications	WB;ELISA;IHC
Species Reactivity	Human;Rat;Mouse
Specificity	This antibody detects endogenous levels of SEMG1 at Human
Immunogen Description	Synthesized peptide derived from human SEMG1
Target Name	SEMG1 SEMG
Uniprot	P04279
GeneID	6406
Calculated MW	51kD
Concentration	1 mg/ml
Formulation	Liquid in PBS containing 50% glycerol, 0.5% BSA and 0.02% sodium azide.
Storage	Store at -20°C/1 year

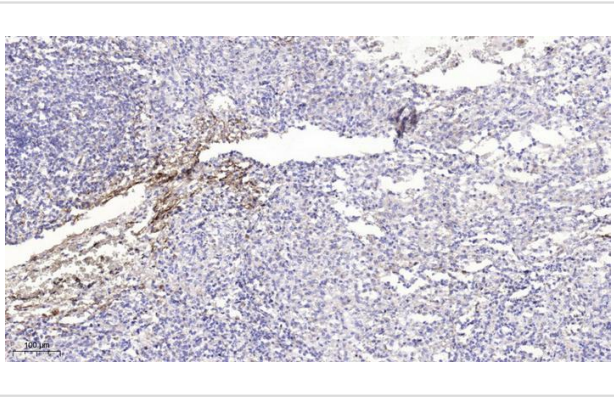
## Application Details

WB 1:500-2000;IHC 1:50-300; ELISA 2000-20000

## Images



Western blot analysis of lysates from KB cells, primary antibody was diluted at 1:1000, 4° over night



Immunohistochemical analysis of paraffin-embedded human spleen.

---

Note: This product is for in vitro research use only