

MRP-L52 Polyclonal Antibody

Catalog No: #49870

Package Size: #49870-1 50ul #49870-2 100ul

Orders: order@signalwayantibody.comSupport: tech@signalwayantibody.com

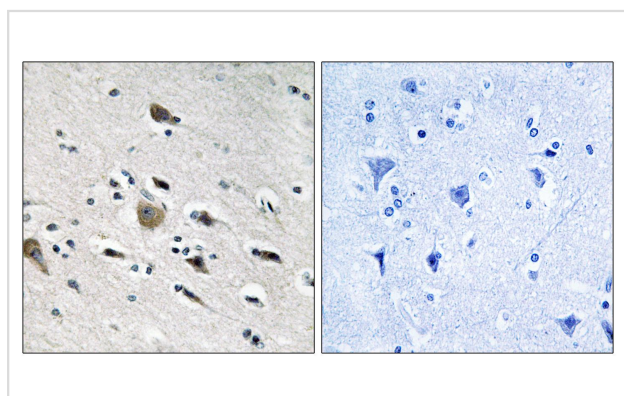
Description

Product Name	MRP-L52 Polyclonal Antibody
Host Species	Rabbit
Clonality	Polyclonal
Isotype	IgG
Applications	IHC;IF;ELISA
Species Reactivity	Human;Rat;Mouse
Specificity	MRP-L52 Polyclonal Antibody detects endogenous levels of MRP-L52 protein.
Immunogen Description	The antiserum was produced against synthesized peptide derived from human MRPL52.
Target Name	MRPL52
Other Names	MRPL52;39S ribosomal protein L52; mitochondrial;L52mt;MRP-L52
Uniprot	Q86TS9
GeneID	122704
Calculated MW	14kD
Concentration	1 mg/ml
Formulation	Liquid in PBS containing 50% glycerol, 0.5% BSA and 0.02% sodium azide.
Storage	Store at -20°C/1 year

Application Details

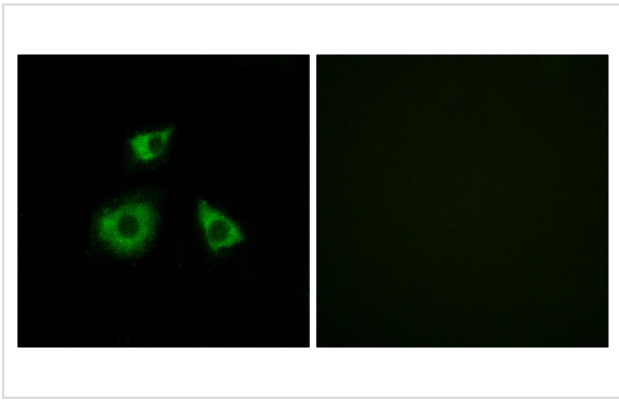
IHC 1:100 - 1:300. IF 1:200 - 1:1000. ELISA: 1:5000

Images



Immunohistochemistry analysis of paraffin-embedded human brain tissue, using MRPL52 Antibody. The picture on the right is blocked with the synthesized peptide.

Immunofluorescence analysis of HUVEC cells, using MRPL52 Antibody. The picture on the right is blocked with the synthesized peptide.



Note: This product is for in vitro research use only