

## Cytokeratin 19&amp;10 mouse mAb

Catalog No: #61562

Package Size: #61562-1 50ul #61562-2 100ul

Orders: order@signalwayantibody.com

Support: tech@signalwayantibody.com

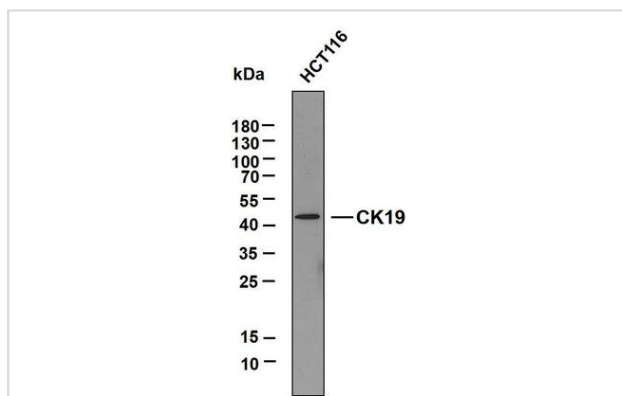
## Description

Product Name	Cytokeratin 19&10 mouse mAb
Host Species	Mouse
Clonality	Monoclonal
Isotype	Mouse IgG1, Kappa
Purification	Protein G
Applications	IHC;WB;IF;ELISA
Species Reactivity	Human
Specificity	The antibody can recognize human CK10 and CK19 protein, and shows no cross reaction with CK1, 5, 6, 7, 8, 13, 14, 15, 17, 18, 20.
Immunogen Description	Synthesized peptide derived from human Cytokeratin 19
Target Name	KRT19 KRT10
Other Names	40 kDa keRatin intermediate filament $\alpha$ CK 19 $\alpha$ CK-19 $\alpha$ CK19 $\alpha$ Cytokeratin 19 $\alpha$ CytokeRatin-19 $\alpha$ K19 $\alpha$ K1C19_HUMAN $\alpha$ K1CS $\alpha$ KeRatin 19 $\alpha$ KeRatin type I 40 kDa $\alpha$ KeRatin type I 40kDa $\alpha$ KeRatin type I cytoskeletal 19 $\alpha$ KeRatin, type I cytoskeletal 19 $\alpha$ KeRatin, type I, 40 kDa $\alpha$ KeRatin-19 $\alpha$ KRT19 $\alpha$ MGC15366
Uniprot	P08727;P13645
GeneID	3880
Calculated MW	44kD
Formulation	PBS, 50% glycerol, 0.05% Proclin 300, 0.05%BSA
Storage	Store at -20°C/1 year

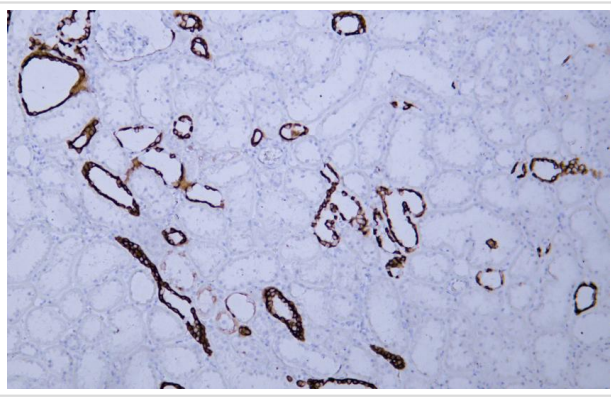
## Application Details

IHC 1:200-1000. WB 1:500-2000. IF 1:100-500. ELISA 1:1000-5000

## Images



Whole cell lysates of HCT116 were separated by 12% SDS-PAGE, and the membrane was blotted with anti-Cytokeratin 19 antibody. The HRP-conjugated anti-Mouse IgG antibody was used to detect the antibody.



Human kidney tissue was stained with Anti-Cytokeratin 19&10 Antibody

---

Note: This product is for in vitro research use only