

## PSGR Polyclonal Antibody

Catalog No: #49998

Package Size: #49998-1 50ul #49998-2 100ul

Orders: [order@signalwayantibody.com](mailto:order@signalwayantibody.com)Support: [tech@signalwayantibody.com](mailto:tech@signalwayantibody.com)

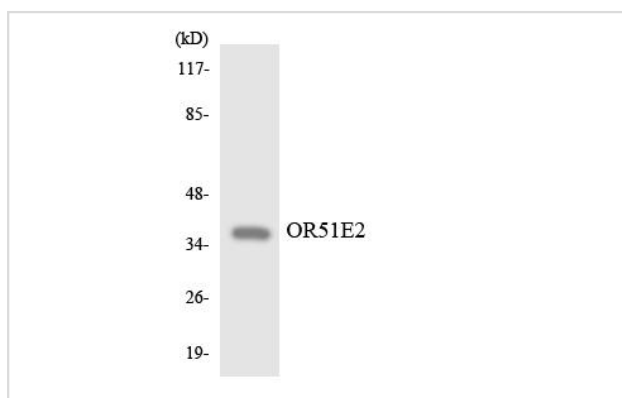
## Description

Product Name	PSGR Polyclonal Antibody
Host Species	Rabbit
Clonality	Polyclonal
Isotype	IgG
Purification	The antibody was affinity-purified from rabbit antiserum by affinity-chromatography using epitope-specific immunogen.
Applications	WB;ELISA;IHC
Species Reactivity	Human;Rat
Specificity	PSGR Polyclonal Antibody detects endogenous levels of PSGR protein.
Immunogen Description	The antiserum was produced against synthesized peptide derived from human OR51E2
Target Name	OR51E2
Other Names	OR51E2;PSGR;Olfactory receptor 51E2;HPRAJ;Olfactory receptor OR11-16;Prostate-specific G-protein coupled receptor
Uniprot	Q9H255
GeneID	81285
Calculated MW	35kD
Concentration	1 mg/ml
Formulation	Liquid in PBS containing 50% glycerol, 0.5% BSA and 0.02% sodium azide.
Storage	Store at -20°C/1 year

## Application Details

WB 1:500-2000;IHC 1:50-300; ELISA 2000-20000

## Images



Western blot analysis of the lysates from HepG2 cells using OR51E2 antibody.



Immunohistochemical analysis of paraffin-embedded human oophoroma.

---

Note: This product is for in vitro research use only