

## T1R3 Polyclonal Antibody

Catalog No: #62000

Package Size: #62000-1 50ul #62000-2 100ul

Orders: [order@signalwayantibody.com](mailto:order@signalwayantibody.com)Support: [tech@signalwayantibody.com](mailto:tech@signalwayantibody.com)

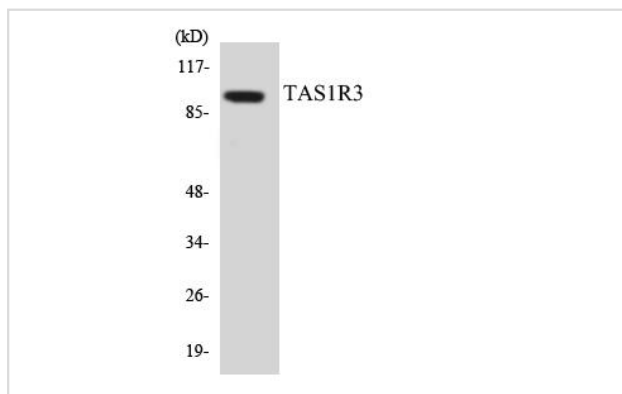
## Description

Product Name	T1R3 Polyclonal Antibody
Host Species	Rabbit
Clonality	Polyclonal
Isotype	IgG
Purification	The antibody was affinity-purified from rabbit antiserum by affinity-chromatography using epitope-specific immunogen.
Applications	WB;IF;ELISA
Species Reactivity	Human;Rat;Mouse
Specificity	T1R3 Polyclonal Antibody detects endogenous levels of T1R3 protein.
Immunogen Description	The antiserum was produced against synthesized peptide derived from human TAS1R3.
Target Name	TAS1R3
Other Names	TAS1R3;T1R3;TR3;Taste receptor type 1 member 3;Sweet taste receptor T1R3
Uniprot	Q7RTX0
GeneID	83756
Calculated MW	93kD
Concentration	1 mg/ml
Formulation	Liquid in PBS containing 50% glycerol, 0.5% BSA and 0.02% sodium azide.
Storage	Store at -20°C/1 year

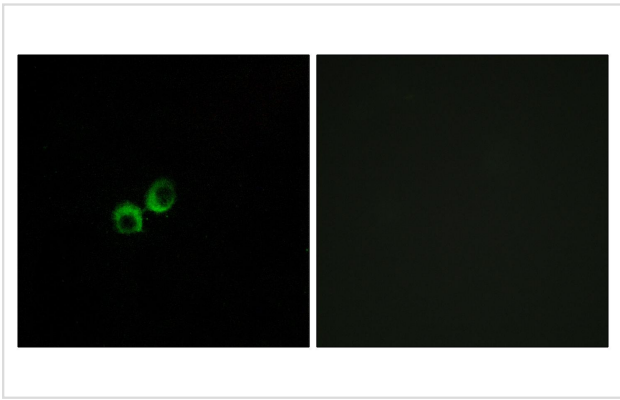
## Application Details

WB 1:500 - 1:2000. IF 1:200 - 1:1000. ELISA: 1:10000.

## Images



Western blot analysis of the lysates from HeLa cells using TAS1R3 antibody.



Immunofluorescence analysis of MCF7 cells, using TAS1R3 Antibody. The picture on the right is blocked with the synthesized peptide.

---

Note: This product is for in vitro research use only