

KIR6.2 Polyclonal Antibody

Catalog No: #62001

Package Size: #62001-1 50ul #62001-2 100ul

Orders: order@signalwayantibody.comSupport: tech@signalwayantibody.com

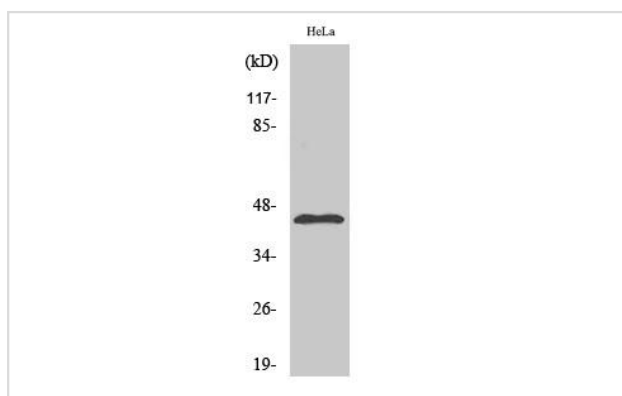
Description

Product Name	KIR6.2 Polyclonal Antibody
Host Species	Rabbit
Clonality	Polyclonal
Isotype	IgG
Purification	The antibody was affinity-purified from rabbit antiserum by affinity-chromatography using epitope-specific immunogen.
Applications	WB;IHC;IF;ELISA
Species Reactivity	Human;Mouse;Rat
Specificity	KIR6.2 Polyclonal Antibody detects endogenous levels of KIR6.2 protein.
Immunogen Description	The antiserum was produced against synthesized peptide derived from human Kir6.2.
Target Name	KCNJ11
Other Names	KCNJ11;ATP-sensitive inward rectifier potassium channel 11;IKATP;Inward rectifier K(+) channel Kir6.2;Potassium channel; inwardly rectifying subfamily J member 11
Uniprot	Q14654
GeneID	3767
Calculated MW	40kD
Concentration	1 mg/ml
Formulation	Liquid in PBS containing 50% glycerol, 0.5% BSA and 0.02% sodium azide.
Storage	Store at -20°C/1 year

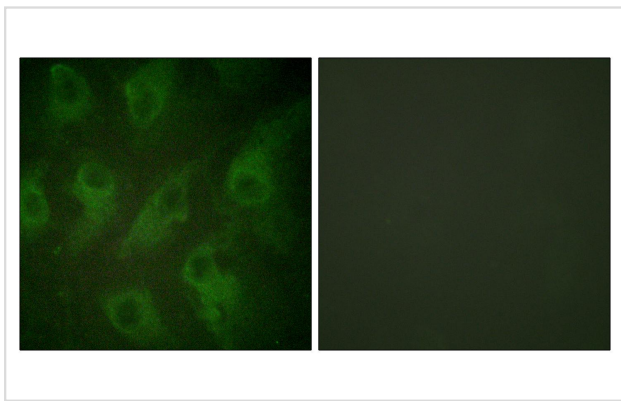
Application Details

WB 1:500 - 1:2000. IHC 1:100 - 1:300. IF 1:200 - 1:1000. ELISA: 1:10000.

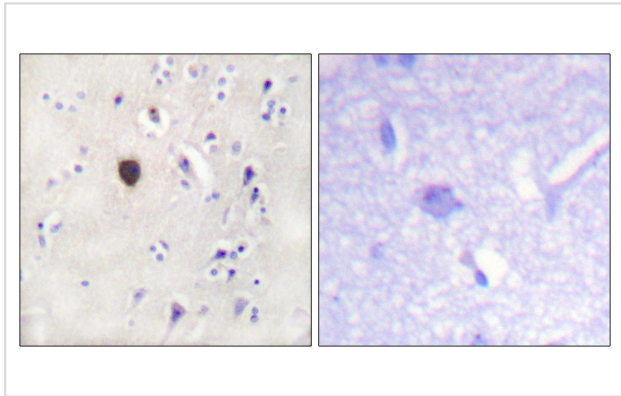
Images



Western Blot analysis of various cells using KIR6.2 Polyclonal Antibody diluted at 1:500



Immunofluorescence analysis of HeLa cells, using Kir6.2 Antibody. The picture on the right is blocked with the synthesized peptide.



Immunohistochemistry analysis of paraffin-embedded human brain tissue, using Kir6.2 Antibody. The picture on the right is blocked with the synthesized peptide.

Note: This product is for in vitro research use only