

APC anti-human CD10

Catalog No: #FC0012



Package Size: #FC0012-1 25Tests #FC0012-2 100Tests

Orders: order@signalwayantibody.com

Support: tech@signalwayantibody.com

Description

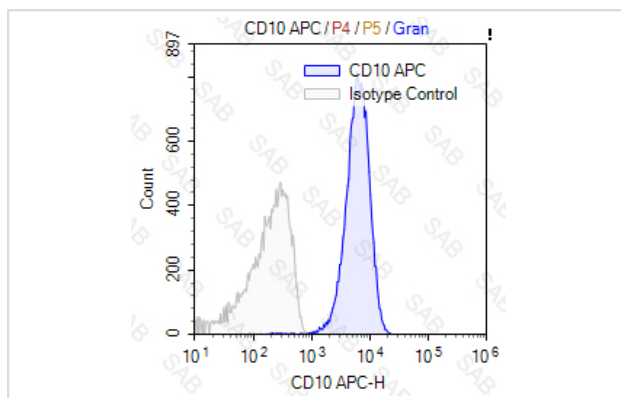
| | |
|--------------------|---|
| Product Name | APC anti-human CD10 |
| Brief Description | mouse monoclonal antibody |
| Host Species | mouse |
| Clonality | Monoclonal |
| Clone No. | s-CB-CALLA |
| Isotype | mouse IgG2b, κ |
| Applications | FC |
| Species Reactivity | human |
| Conjugates | APC |
| Target Name | CD10 |
| Formulation | 0.2%BSA and 0.1%Proclin 300 Phosphate-buffered solution,PH7.2-7.4 |
| Storage | Store at 4°C. DO NOT FREEZE. LIGHT SENSITIVE MATERIAL. |

Application Details

Test: 5 µl/Test

Notice: This reagent has been pre-diluted for use at recommended volume per test in flow cytometry analysis. Typically, 1x 10⁶ cells can be tested per experiment. Refer to the detailed scenario as you test.

Images



Human peripheral blood granulocytes stained with APC anti-human CD10 (colored histogram) or APC mouse IgG2b κ (gray histogram)

Note: This product is for in vitro research use only