

## APC anti-human CD20

Catalog No: #FC0026

Package Size: #FC0026-1 25Tests #FC0026-2 100Tests

Orders: order@signalwayantibody.com

Support: tech@signalwayantibody.com

## Description

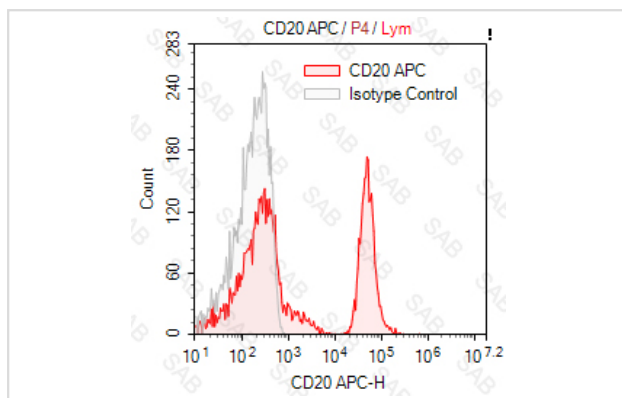
|                    |   |
|--------------------|---|
| Product Name       | APC anti-human CD20   |
| Brief Description  | mouse monoclonal antibody   |
| Host Species       | mouse   |
| Clonality          | Monoclonal  |
| Clone No.          | s-2H7   |
| Isotype            | mouse IgG2b, κ  |
| Applications       | FC  |
| Species Reactivity | human   |
| Conjugates         | APC   |
| Target Name        | CD20  |
| Formulation        | 0.2%BSA and 0.1%Proclin 300 Phosphate-buffered solution,PH7.2-7.4 |
| Storage            | Store at 4°C. DO NOT FREEZE. LIGHT SENSITIVE MATERIAL.            |

## Application Details

Test: 5 µl/Test

Notice: This reagent has been pre-diluted for use at recommended volume per test in flow cytometry analysis. Typically, 1x 10<sup>6</sup> cells can be tested per experiment. Refer to the detailed scenario as you test.

## Images



Human peripheral blood lymphocytes stained with APC anti-human CD20 (colored histogram) or APC mouse IgG2b κ (gray histogram)

Note: This product is for in vitro research use only