

APC anti-human CD235a

Catalog No: #FC0102



Package Size: #FC0102-1 25Tests #FC0102-2 100Tests

Orders: [order@signalwayantibody.com](mailto:order@signalwayantibody.com)  
Support: [tech@signalwayantibody.com](mailto:tech@signalwayantibody.com)

Description

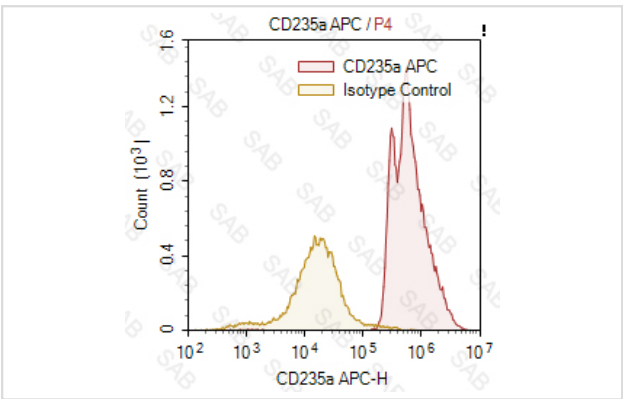
Product Name	APC anti-human CD235a
Brief Description	mouse monoclonal antibody
Host Species	mouse
Clonality	Monoclonal
Clone No.	s-BH21M33
Isotype	mouse IgG2m
Applications	FC
Species Reactivity	human
Conjugates	APC
Target Name	CD235a
Formulation	0.2%BSA and 0.1%Proclin 300 Phosphate-buffered solution,PH7.2-7.4
Storage	Store at 4°C. DO NOT FREEZE. LIGHT SENSITIVE MATERIAL.

Application Details

Test: 5 µl/Test

Notice: This reagent has been pre-diluted for use at recommended volume per test in flow cytometry analysis. Typically, 1x 10<sup>6</sup> cells can be tested per experiment. Refer to the detailed scenario as you test.

Images



Human red blood cells stained with APC anti-human CD235a (colored histogram) or APC mouse IgG2b (gray histogram)

Note: This product is for in vitro research use only