

APC anti-human HLA-A*01:01 B*08:01 C*07:01 HLA Class I*01:01



Catalog No: #FC0112

Orders: order@signalwayantibody.com

Support: tech@signalwayantibody.com

Description

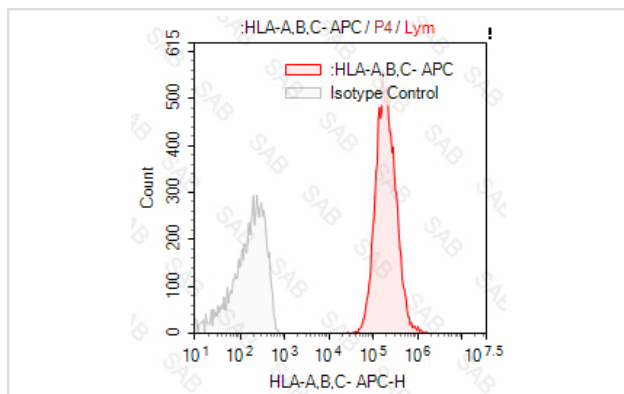
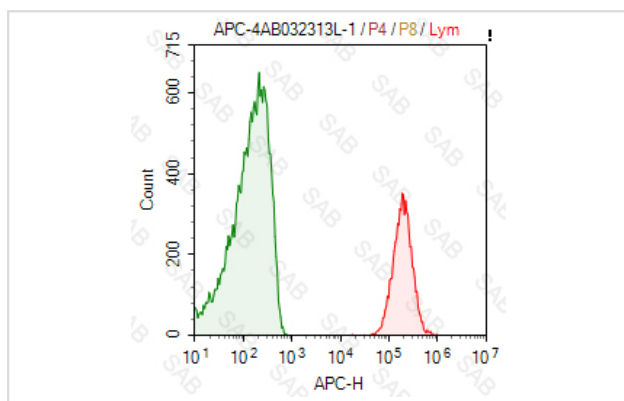
Product Name	APC anti-human HLA-A*01:01 B*08:01 C*07:01 HLA Class I*01:01
Brief Description	mouse monoclonal antibody
Clonality	Monoclonal
Clone No.	s-W6/32
Isotype	mouse IgG2a, κ
Applications	FC
Species Reactivity	human
Conjugates	APC
Target Name	HLA-A*01:01 B*08:01 C*07:01 HLA Class I*01:01
Formulation	0.2%BSA and 0.1%Proclin 300 Phosphate-buffered solution,PH7.2-7.4
Storage	Store at 4°C. DO NOT FREEZE. LIGHT SENSITIVE MATERIAL.

Application Details

Test: 5 μl/Test

Notice: This reagent has been pre-diluted for use at recommended volume per test in flow cytometry analysis. Typically, 1x 10⁶ cells can be tested per experiment. Refer to the detailed scenario as you test.

Images



Human peripheral blood lymphocytes stained with APC anti-human HLA Class I (colored histogram) or APC mouse IgG2a κ (gray histogram)

Note: This product is for in vitro research use only