

# Biotin anti-human CD11b

Catalog No: #FC0127



Package Size: #FC0127-1 25ug #FC0127-2 100ug

Orders: [order@signalwayantibody.com](mailto:order@signalwayantibody.com)

Support: [tech@signalwayantibody.com](mailto:tech@signalwayantibody.com)

## Description

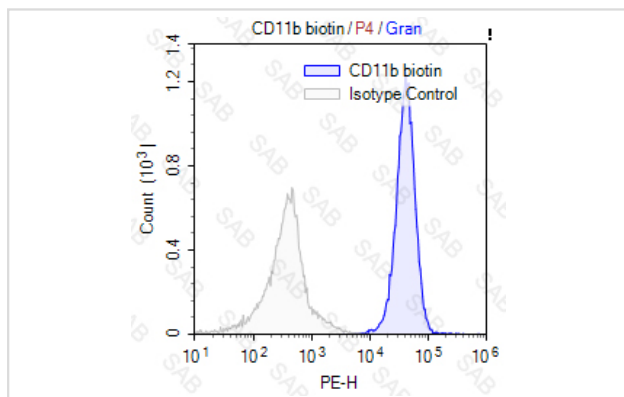
Product Name	Biotin anti-human CD11b
Clonality	Monoclonal
Clone No.	s-LM2/1.6.11
Isotype	mouse IgG1
Applications	FC
Species Reactivity	human
Conjugates	Biotin
Target Name	CD11b
Formulation	0.2%BSA and 0.1%Proclin 300 Phosphate-buffered solution,PH7.2-7.4
Storage	Store at 4°C. DO NOT FREEZE. LIGHT SENSITIVE MATERIAL.

## Application Details

Test: 5 &mu;l/Test

Notice: This reagent has been pre-diluted for use at recommended volume per test in flow cytometry analysis. Typically, 1x 10<sup>6</sup> cells can be tested per experiment. Refer to the detailed scenario as you test.

## Images



Human peripheral blood granulocytes stained with Biotin anti-human CD11b(colored histogram) or Biotin mouse IgG1 (gray histogram),followed by SAV-PE.

Note: This product is for in vitro research use only