

# PE-Cy5 anti-human CD8

Catalog No: #FC0154

Package Size: #FC0154-1 25Tests #FC0154-2 100Tests

Orders: [order@signalwayantibody.com](mailto:order@signalwayantibody.com)

Support: [tech@signalwayantibody.com](mailto:tech@signalwayantibody.com)

## Description

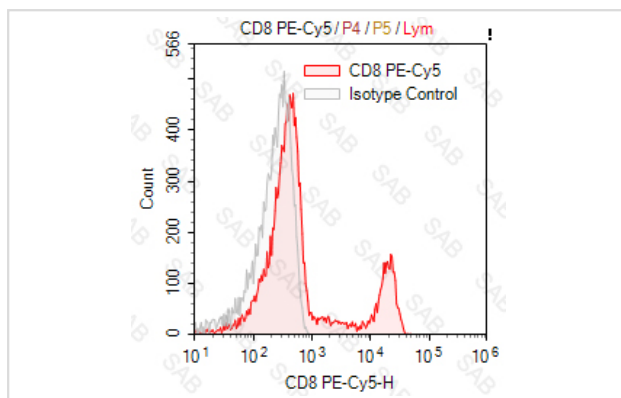
|                    |                                                                   |
|--------------------|-------------------------------------------------------------------|
| Product Name       | PE-Cy5 anti-human CD8                                             |
| Brief Description  | mouse monoclonal antibody                                         |
| Host Species       | mouse                                                             |
| Clonality          | Monoclonal                                                        |
| Clone No.          | s-Riv11                                                           |
| Isotype            | mouse IgG1                                                        |
| Applications       | FC                                                                |
| Species Reactivity | human                                                             |
| Conjugates         | PE-Cy5                                                            |
| Target Name        | CD8                                                               |
| Formulation        | 0.2%BSA and 0.1%Proclin 300 Phosphate-buffered solution,PH7.2-7.4 |
| Storage            | Store at 4°C. DO NOT FREEZE. LIGHT SENSITIVE MATERIAL.            |

## Application Details

Test: 10 µl/Test

Notice: This reagent has been pre-diluted for use at recommended volume per test in flow cytometry analysis. Typically, 1x 10<sup>6</sup> cells can be tested per experiment. Refer to the detailed scenario as you test.

## Images



Human peripheral blood lymphocytes stained with PE-Cy5 anti-human CD8 (colored histogram) or PE-Cy5 mouse IgG1 (gray histogram)

Note: This product is for in vitro research use only