

FITC anti-human CD3

Catalog No: #FC0199

Package Size: #FC0199-1 25Tests #FC0199-2 100Tests

Orders: order@signalwayantibody.com

Support: tech@signalwayantibody.com

Description

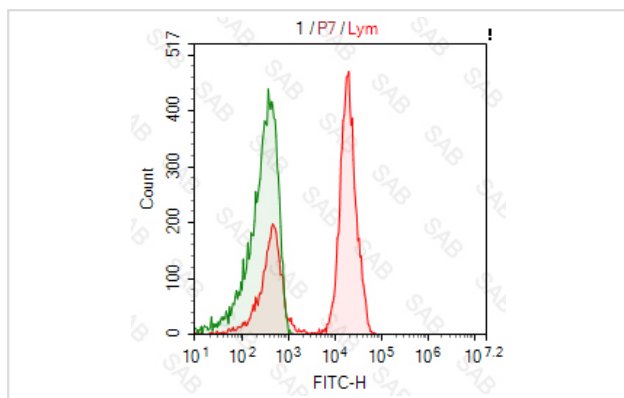
Product Name	FITC anti-human CD3
Brief Description	mouse monoclonal antibody
Host Species	mouse
Clonality	Monoclonal
Clone No.	s-UCHT1
Isotype	mouse IgG1,k
Applications	FC
Species Reactivity	human
Conjugates	FITC
Target Name	CD3
Formulation	0.2%BSA and 0.1%Proclin 300 Phosphate-buffered solution,PH7.2-7.4
Storage	Store at 4°C. DO NOT FREEZE. LIGHT SENSITIVE MATERIAL.

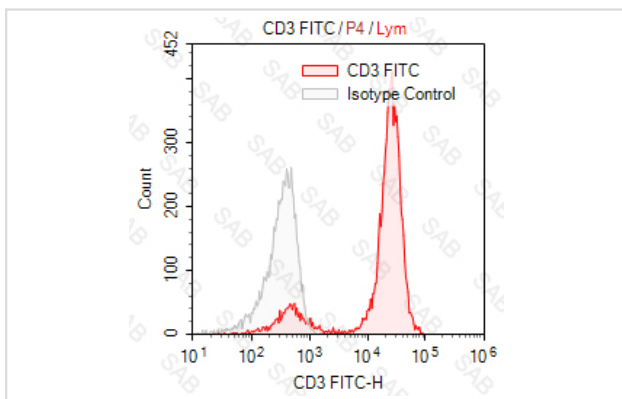
Application Details

Test: 5 µl/Test

Notice: This reagent has been pre-diluted for use at recommended volume per test in flow cytometry analysis. Typically, 1x 10⁶ cells can be tested per experiment. Refer to the detailed scenario as you test.

Images





Human peripheral blood lymphocytes stained with FITC anti human CD3 (colored histogram) or FITC mouse IgG1 κ (gray histogram)

Note: This product is for in vitro research use only