

## FITC anti-human CD45

Catalog No: #FC0252

Package Size: #FC0252-1 25Tests #FC0252-2 100Tests

Orders: [order@signalwayantibody.com](mailto:order@signalwayantibody.com)Support: [tech@signalwayantibody.com](mailto:tech@signalwayantibody.com)

## Description

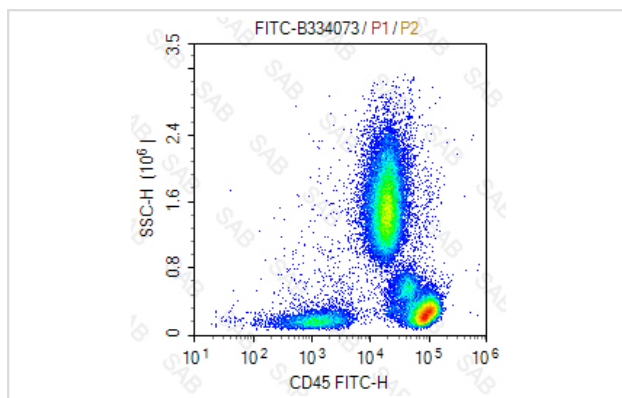
Product Name	FITC anti-human CD45
Brief Description	mouse monoclonal antibody
Host Species	mouse
Clonality	Monoclonal
Clone No.	s-HI30
Isotype	mouse IgG1,k
Applications	FC
Species Reactivity	human
Conjugates	FITC
Target Name	CD45
Formulation	0.2%BSA and 0.1%Proclin 300 Phosphate-buffered solution,PH7.2-7.4
Storage	Store at 4°C. DO NOT FREEZE. LIGHT SENSITIVE MATERIAL.

## Application Details

Test: 5 µl/Test

Notice: This reagent has been pre-diluted for use at recommended volume per test in flow cytometry analysis. Typically, 1x 10<sup>6</sup> cells can be tested per experiment. Refer to the detailed scenario as you test.

## Images



Human peripheral blood stained with FITC anti-human CD45

Note: This product is for in vitro research use only