

## FITC anti-human CD326

Catalog No: #FC0326

Package Size: #FC0326-1 25Tests #FC0326-2 100Tests

Orders: order@signalwayantibody.com

Support: tech@signalwayantibody.com

## Description

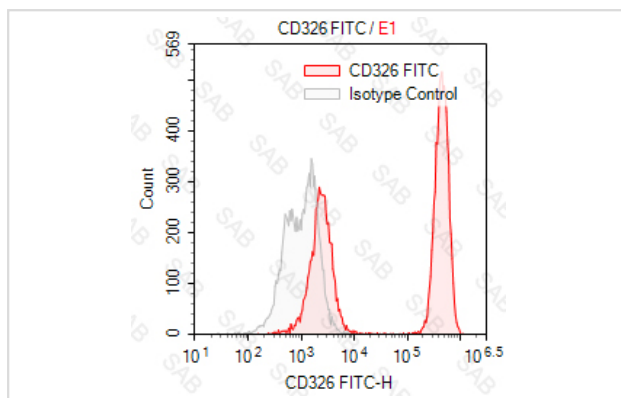
|                    |   |
|--------------------|---|
| Product Name       | FITC anti-human CD326   |
| Brief Description  | mouse monoclonal antibody   |
| Host Species       | mouse   |
| Clonality          | Monoclonal  |
| Clone No.          | s-VU-1D9  |
| Isotype            | mouse IgG1  |
| Applications       | FC  |
| Species Reactivity | human   |
| Conjugates         | FITC  |
| Target Name        | CD326   |
| Formulation        | 0.2%BSA and 0.1%Proclin 300 Phosphate-buffered solution,PH7.2-7.4 |
| Storage            | Store at 4°C. DO NOT FREEZE. LIGHT SENSITIVE MATERIAL.            |

## Application Details

Test: 5 µl/Test

Notice: This reagent has been pre-diluted for use at recommended volume per test in flow cytometry analysis. Typically, 1x 10<sup>6</sup> cells can be tested per experiment. Refer to the detailed scenario as you test.

## Images



Two mixed HT-29 cell line stained with FITC anti-human CD326 (colored histogram) or FITC mouse IgG1 (gray histogram)

Note: This product is for in vitro research use only