

# FITC anti-human HLA-A\*01:01 B\*07:02 C\*07:01 HLA Class I\*01:01



Catalog No: #FC0328

Orders: [order@signalwayantibody.com](mailto:order@signalwayantibody.com)  
 Support: [tech@signalwayantibody.com](mailto:tech@signalwayantibody.com)

## Description

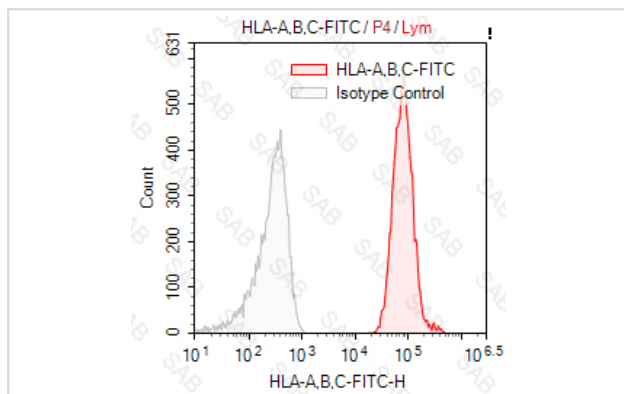
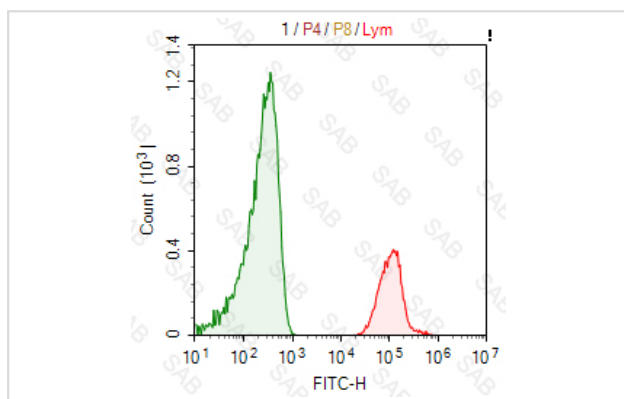
Product Name	FITC anti-human HLA-A*01:01 B*07:02 C*07:01 HLA Class I*01:01
Brief Description	mouse monoclonal antibody
Clonality	Monoclonal
Clone No.	s-W6/32
Isotype	mouse IgG2a, κ
Applications	FC
Species Reactivity	human
Conjugates	FITC
Target Name	HLA-A*01:01 B*07:02 C*07:01 HLA Class I*01:01
Formulation	0.2%BSA and 0.1%Proclin 300 Phosphate-buffered solution,PH7.2-7.4
Storage	Store at 4°C. DO NOT FREEZE. LIGHT SENSITIVE MATERIAL.

## Application Details

Test: 5 μl/Test

Notice: This reagent has been pre-diluted for use at recommended volume per test in flow cytometry analysis. Typically, 1x 10<sup>6</sup> cells can be tested per experiment. Refer to the detailed scenario as you test.

## Images



Human peripheral blood lymphocytes stained with APC anti-human HLA Class I (colored histogram) or APC mouse IgG2a κ (gray histogram)

---

Note: This product is for in vitro research use only