

FITC anti-human HLA-B27

Catalog No: #FC0329



Package Size: #FC0329-1 25Tests #FC0329-2 100Tests

Orders: order@signalwayantibody.com

Support: tech@signalwayantibody.com

Description

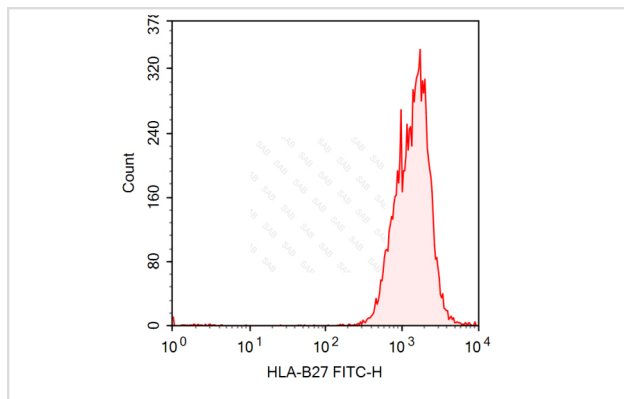
Product Name	FITC anti-human HLA-B27
Brief Description	mouse monoclonal antibody
Host Species	mouse
Clonality	Monoclonal
Clone No.	s-ABC.m3
Isotype	mouse IgG2a
Applications	FC
Species Reactivity	human
Conjugates	FITC
Target Name	HLA-B27
Formulation	0.2%BSA and 0.1%Proclin 300 Phosphate-buffered solution,PH7.2-7.4
Storage	Store at 4°C. DO NOT FREEZE. LIGHT SENSITIVE MATERIAL.

Application Details

Test: 5 µl/Test

Notice: This reagent has been pre-diluted for use at recommended volume per test in flow cytometry analysis. Typically, 1x 10⁶ cells can be tested per experiment. Refer to the detailed scenario as you test.

Images



Peripheral blood of patients with ankylosing spondylitis stained with FITC anti-human HLA-B27 (Fig.1) and Peripheral blood of normal person stained with FITC anti-human HLA-B27 (Fig.2)

Note: This product is for in vitro research use only