

FITC anti-human IFN- $\gamma$ 

Catalog No: #FC0336

Package Size: #FC0336-1 25Tests #FC0336-2 100Tests

Orders: [order@signalwayantibody.com](mailto:order@signalwayantibody.com)Support: [tech@signalwayantibody.com](mailto:tech@signalwayantibody.com)

## Description

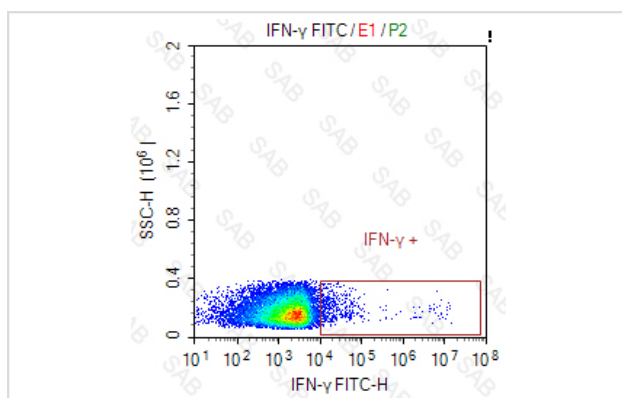
Product Name	FITC anti-human IFN- $\gamma$
Brief Description	mouse monoclonal antibody
Host Species	mouse
Clonality	Monoclonal
Clone No.	s-GAMMA3-11.1
Isotype	mouse IgG1
Applications	FC
Species Reactivity	human
Conjugates	FITC
Target Name	IFN- $\gamma$
Formulation	0.2%BSA and 0.1%Proclin 300 Phosphate-buffered solution,PH7.2-7.4
Storage	Store at 4°C. DO NOT FREEZE. LIGHT SENSITIVE MATERIAL.

## Application Details

Test: 5  $\mu$ l/Test

Notice: This reagent has been pre-diluted for use at recommended volume per test in flow cytometry analysis. Typically,  $1 \times 10^6$  cells can be tested per experiment. Refer to the detailed scenario as you test.

## Images



Intracellular Cell Stimulation Cocktail (plus protein transport inhibitors)-stimulated peripheral blood mononuclear cells was fixed permeabilized and intracellularly stained with FITC anti-human IFN- $\gamma$

Note: This product is for in vitro research use only