

Alexa Fluor 647 anti-human CD25

Catalog No: #FC0376

Package Size: #FC0376-1 25Tests #FC0376-2 100Tests

Orders: order@signalwayantibody.com

Support: tech@signalwayantibody.com

Description

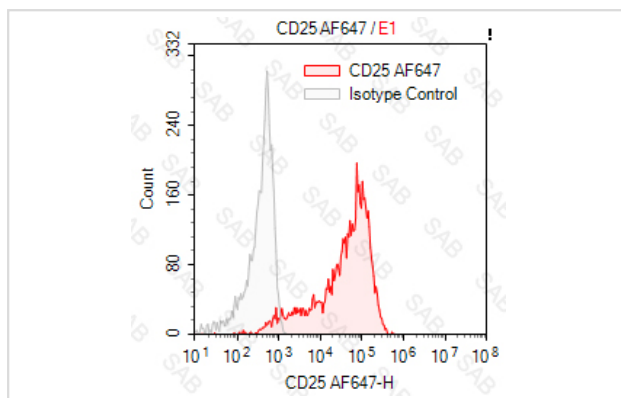
Product Name	Alexa Fluor 647 anti-human CD25
Brief Description	mouse monoclonal antibody
Host Species	mouse
Clonality	Monoclonal
Clone No.	s-7G7B6
Isotype	mouse IgG2a
Applications	FC
Species Reactivity	human
Conjugates	Alexa Fluor 647
Target Name	CD25
Formulation	0.2%BSA and 0.1%Proclin 300 Phosphate-buffered solution,PH7.2-7.4
Storage	Store at 4°C. DO NOT FREEZE. LIGHT SENSITIVE MATERIAL.

Application Details

Test: 10 µl/Test

Notice: This reagent has been pre-diluted for use at recommended volume per test in flow cytometry analysis. Typically, 1x 10⁶ cells can be tested per experiment. Refer to the detailed scenario as you test.

Images



PHA-stimulated (3 days) human peripheral blood lymphocytes stained with Alexa Fluor 647 anti-human CD25 (colored histogram) or Alexa Fluor 647 mouse IgG2a (gray histogram)

Note: This product is for in vitro research use only