

## Alexa Fluor 647 anti-human Ki-67

Catalog No: #FC0386

Package Size: #FC0386-1 25Tests #FC0386-2 100Tests

Orders: order@signalwayantibody.com

Support: tech@signalwayantibody.com

## Description

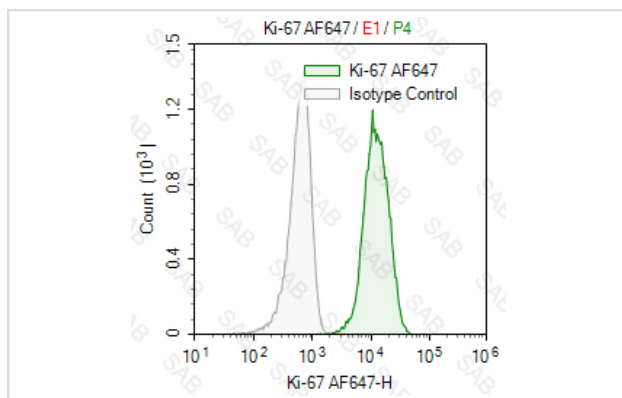
Product Name	Alexa Fluor 647 anti-human Ki-67
Brief Description	mouse monoclonal antibody
Host Species	mouse
Clonality	Monoclonal
Clone No.	s-Ki-67
Isotype	mouse IgG1,k
Applications	FC
Species Reactivity	human
Conjugates	Alexa Fluor 647
Target Name	Ki-67
Formulation	0.2%BSA and 0.1%Proclin 300 Phosphate-buffered solution,PH7.2-7.4
Storage	Store at 4°C. DO NOT FREEZE. LIGHT SENSITIVE MATERIAL.

## Application Details

Test: 5 µl/Test

Notice: This reagent has been pre-diluted for use at recommended volume per test in flow cytometry analysis. Typically, 1x 10<sup>6</sup> cells can be tested per experiment. Refer to the detailed scenario as you test.

## Images



MCF-7 cell line was fixed and permeabilized stained with Alexa Fluor 647 anti-human Ki-67 Antibody (colored histogram) or Alexa Fluor 647 mouse IgG1 κ (gray histogram)

Note: This product is for in vitro research use only