

PE-Cy7 anti-human CD206

Catalog No: #FC0427



Package Size: #FC0427-1 25Tests #FC0427-2 100Tests

Orders: order@signalwayantibody.com

Support: tech@signalwayantibody.com

Description

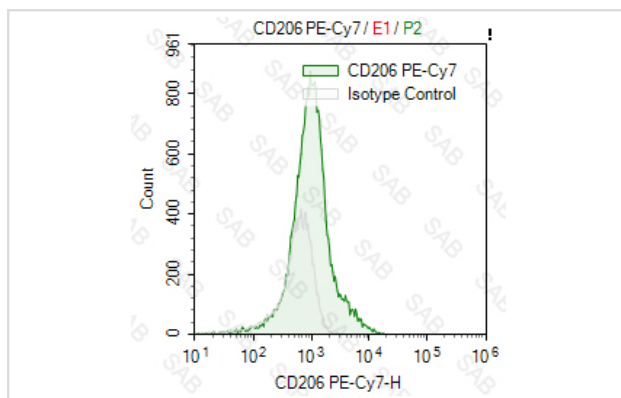
Product Name	PE-Cy7 anti-human CD206
Brief Description	mouse monoclonal antibody
Host Species	mouse
Clonality	Monoclonal
Clone No.	s-15-2
Isotype	mouse IgG1,k
Applications	FC
Species Reactivity	human
Conjugates	PE-Cy7
Target Name	CD206
Formulation	0.2%BSA and 0.1%Proclin 300 Phosphate-buffered solution,PH7.2-7.4
Storage	Store at 4°C. DO NOT FREEZE. LIGHT SENSITIVE MATERIAL.

Application Details

Test: 5 µl/Test

Notice: This reagent has been pre-diluted for use at recommended volume per test in flow cytometry analysis. Typically, 1x 10⁶ cells can be tested per experiment. Refer to the detailed scenario as you test.

Images



GM-CSF- stimulated (day-3) human monocytes stained with PE-Cy7 anti-human CD206 (colored histogram) or PE-Cy7 mouse IgG1 κ (gray histogram)

Note: This product is for in vitro research use only