

PE anti-human CD20

Catalog No: #FC0492

Package Size: #FC0492-1 25Tests #FC0492-2 100Tests

Orders: order@signalwayantibody.com
Support: tech@signalwayantibody.com

Description

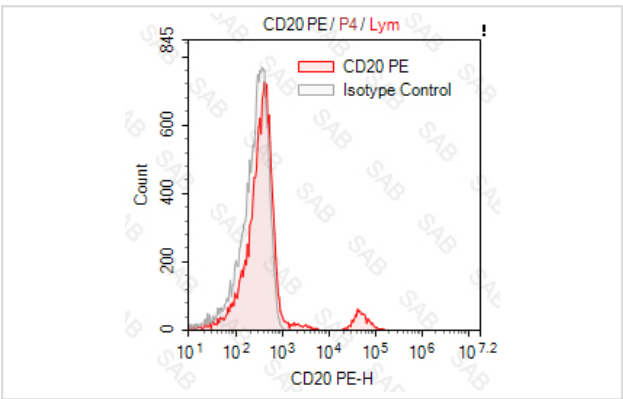
Product Name	PE anti-human CD20
Brief Description	mouse monoclonal antibody
Host Species	mouse
Clonality	Monoclonal
Clone No.	s-2H7
Isotype	mouse IgG2b, κ
Applications	FC
Species Reactivity	human
Conjugates	PE
Target Name	CD20
Formulation	0.2%BSA and 0.1%Proclin 300 Phosphate-buffered solution,PH7.2-7.4
Storage	Store at 4°C. DO NOT FREEZE. LIGHT SENSITIVE MATERIAL.

Application Details

Test: 5 µl/Test

Notice: This reagent has been pre-diluted for use at recommended volume per test in flow cytometry analysis. Typically, 1x 10⁶ cells can be tested per experiment. Refer to the detailed scenario as you test.

Images



Human peripheral blood lymphocytes stained with PE anti human CD20 (colored histogram) or PE mouse IgG2b κ (gray histogram)

Note: This product is for in vitro research use only