

PE anti-human CD65

Catalog No: #FC0555

Package Size: #FC0555-1 25Tests #FC0555-2 100Tests

Orders: order@signalwayantibody.comSupport: tech@signalwayantibody.com

Description

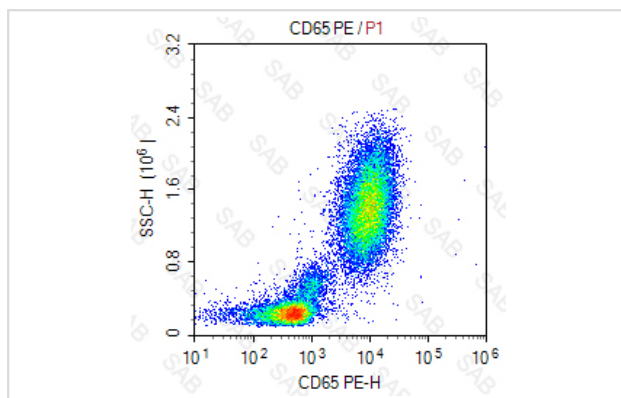
| | |
|--------------------|---|
| Product Name | PE anti-human CD65 |
| Brief Description | mouse monoclonal antibody |
| Host Species | mouse |
| Clonality | Monoclonal |
| Clone No. | s-VIM8 |
| Isotype | mouse IgM, κ |
| Applications | FC |
| Species Reactivity | human |
| Conjugates | PE |
| Target Name | CD65 |
| Formulation | 0.2%BSA and 0.1%Proclin 300 Phosphate-buffered solution,PH7.2-7.4 |
| Storage | Store at 4°C. DO NOT FREEZE. LIGHT SENSITIVE MATERIAL. |

Application Details

Test: 5 μ l/Test

Notice: This reagent has been pre-diluted for use at recommended volume per test in flow cytometry analysis. Typically, 1×10^6 cells can be tested per experiment. Refer to the detailed scenario as you test.

Images



Human peripheral blood stained with PE anti-human CD65

Note: This product is for in vitro research use only