

PE anti-human CD235

Catalog No: #FC0605

Package Size: #FC0605-1 25Tests #FC0605-2 100Tests

Orders: order@signalwayantibody.com

Support: tech@signalwayantibody.com

Description

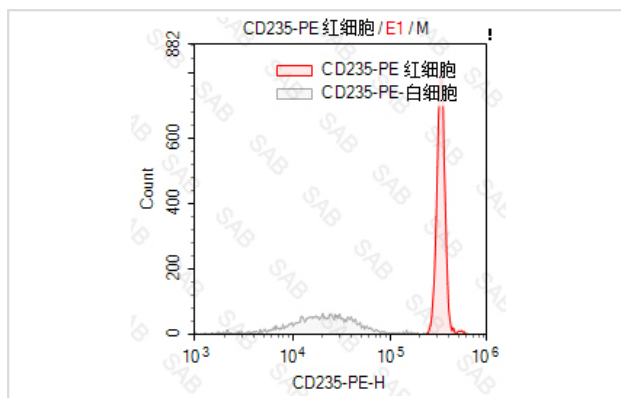
Product Name	PE anti-human CD235
Brief Description	mouse monoclonal antibody
Host Species	mouse
Clonality	Monoclonal
Clone No.	s-HIR2
Isotype	mouse IgG2b
Applications	FC
Species Reactivity	human
Conjugates	PE
Target Name	CD235
Formulation	0.2%BSA and 0.1%Proclin 300 Phosphate-buffered solution,PH7.2-7.4
Storage	Store at 4°C. DO NOT FREEZE. LIGHT SENSITIVE MATERIAL.

Application Details

Test: 5 µl/Test

Notice: This reagent has been pre-diluted for use at recommended volume per test in flow cytometry analysis. Typically, 1x 10⁶ cells can be tested per experiment. Refer to the detailed scenario as you test.

Images



Human red blood cells stained with PE anti-human CD235 (colored histogram) or white blood cells stained with PE anti-human CD235 (gray histogram)

Note: This product is for in vitro research use only