

PE anti-human HLA-A α B α C α HLA Class I α

Catalog No: #FC0621

Orders: order@signalwayantibody.com
 Support: tech@signalwayantibody.com

Description

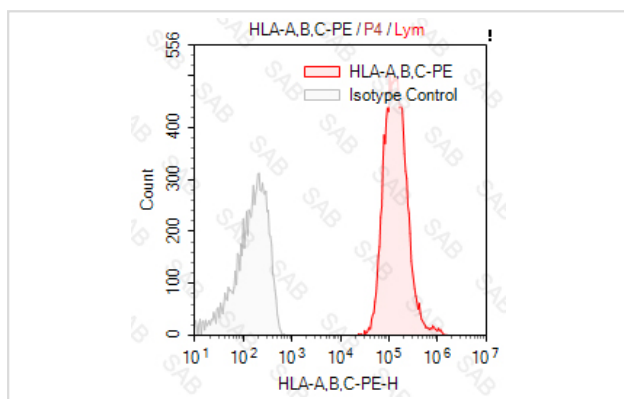
Product Name	PE anti-human HLA-A α B α C α HLA Class I α
Brief Description	mouse monoclonal antibody
Clonality	Monoclonal
Clone No.	s-W6/32
Isotype	mouse IgG2a, κ
Applications	FC
Species Reactivity	human
Conjugates	PE
Target Name	HLA-A α B α C α HLA Class I α
Formulation	0.2%BSA and 0.1%Proclin 300 Phosphate-buffered solution,PH7.2-7.4
Storage	Store at 4°C. DO NOT FREEZE. LIGHT SENSITIVE MATERIAL.

Application Details

Test: 5 μ l/Test

Notice: This reagent has been pre-diluted for use at recommended volume per test in flow cytometry analysis. Typically, 1x 10⁶ cells can be tested per experiment. Refer to the detailed scenario as you test.

Images



Human peripheral blood lymphocytes stained with APC anti-human HLA Class I (colored histogram) or APC mouse IgG2a κ (gray histogram)

Note: This product is for in vitro research use only