

## PE anti-human IL-12p40

Catalog No: #FC0630

Package Size: #FC0630-1 25Tests #FC0630-2 100Tests

Orders: order@signalwayantibody.com

Support: tech@signalwayantibody.com

## Description

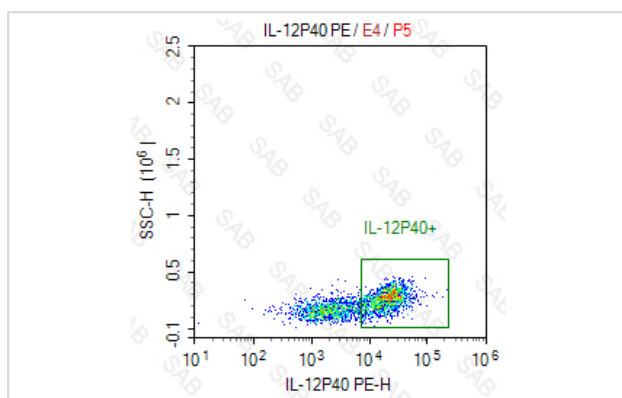
Product Name	PE anti-human IL-12p40
Brief Description	Human monoclonal antibody
Host Species	Human
Clonality	Monoclonal
Clone No.	s-ABT-874
Isotype	Human IgG1, $\lambda$
Applications	FC
Species Reactivity	human
Conjugates	PE
Target Name	IL-12p40
Formulation	0.2%BSA and 0.1%Proclin 300 Phosphate-buffered solution,PH7.2-7.4
Storage	Store at 4°C. DO NOT FREEZE. LIGHT SENSITIVE MATERIAL.

## Application Details

Test: 5  $\mu$ l/Test

Notice: This reagent has been pre-diluted for use at recommended volume per test in flow cytometry analysis. Typically, 1x 10<sup>6</sup> cells can be tested per experiment. Refer to the detailed scenario as you test.

## Images



Intracellular Cell Stimulation Cocktail (plus protein transport inhibitors)-stimulated peripheral blood mononuclear cells was fixed permeabilized and intracellular stained with PE anti-human IL-2

Note: This product is for in vitro research use only