

Pacific Blue anti-human/mouse CD11b

Catalog No: #FC0708

Package Size: #FC0708-1 25Tests #FC0708-2 100Tests

Orders: order@signalwayantibody.com

Support: tech@signalwayantibody.com

Description

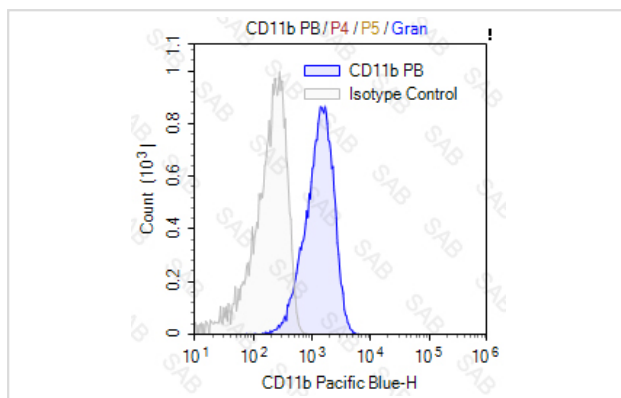
Product Name	Pacific Blue anti-human/mouse CD11b
Brief Description	rat monoclonal antibody
Host Species	rat
Clonality	Monoclonal
Clone No.	s-M1/70
Isotype	rat IgG2b
Applications	FC
Species Reactivity	human/mouse
Conjugates	Pacific Blue
Target Name	CD11b
Formulation	0.2%BSA and 0.1%Proclin 300 Phosphate-buffered solution,PH7.2-7.4
Storage	Store at 4°C. DO NOT FREEZE. LIGHT SENSITIVE MATERIAL.

Application Details

Test: 5 µl/Test

Notice: This reagent has been pre-diluted for use at recommended volume per test in flow cytometry analysis. Typically, 1x 10⁶ cells can be tested per experiment. Refer to the detailed scenario as you test.

Images



Human peripheral blood granulocytes stained with Pacific Blue anti-human/mouse CD11b (colored histogram) or Pacific Bluerat IgG2b (gray histogram)

Note: This product is for in vitro research use only