

Biotin anti-human CD15

Catalog No: #FC0753



Package Size: #FC0753-1 25ug #FC0753-2 100ug

Orders: order@signalwayantibody.com

Support: tech@signalwayantibody.com

Description

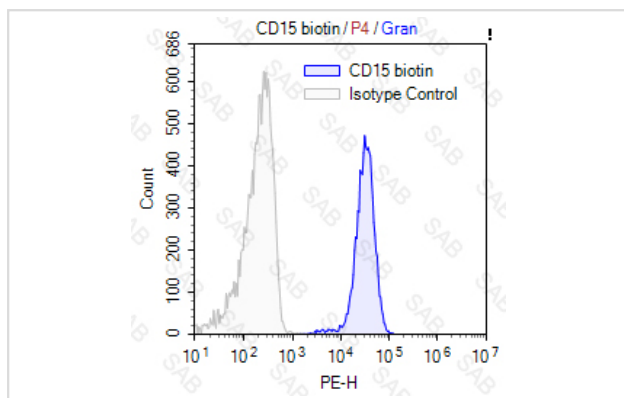
Product Name	Biotin anti-human CD15
Brief Description	mouse monoclonal antibody
Host Species	mouse
Clonality	Monoclonal
Clone No.	s-28
Isotype	mouse IgM
Applications	FC
Species Reactivity	human
Conjugates	Biotin
Target Name	CD15
Formulation	0.2%BSA and 0.1%Proclin 300 Phosphate-buffered solution,PH7.2-7.4
Storage	Store at 4°C. DO NOT FREEZE. LIGHT SENSITIVE MATERIAL.

Application Details

Test: 5 µl/Test

Notice: This reagent has been pre-diluted for use at recommended volume per test in flow cytometry analysis. Typically, 1x 10⁶ cells can be tested per experiment. Refer to the detailed scenario as you test.

Images



Human peripheral blood granulocytes stained with Biotin anti-human CD15 (colored histogram) or Biotin mouse IgM (gray histogram), followed by SAV-PE.

Note: This product is for in vitro research use only