

# FITC anti-mouse Ly-6G/Ly-6C

Catalog No: #FC1046

Package Size: #FC1046-1 25Tests #FC1046-2 100Tests

Orders: [order@signalwayantibody.com](mailto:order@signalwayantibody.com)

Support: [tech@signalwayantibody.com](mailto:tech@signalwayantibody.com)

## Description

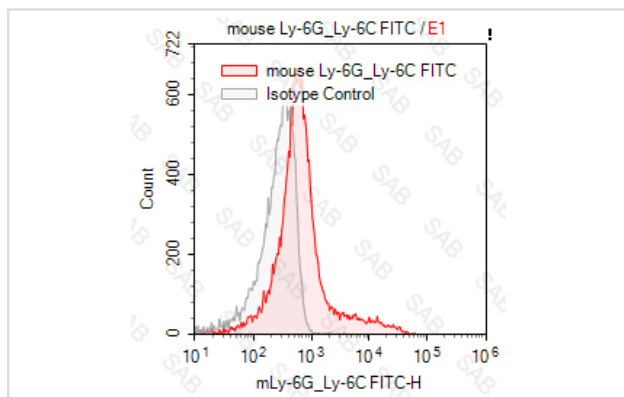
Product Name	FITC anti-mouse Ly-6G/Ly-6C
Clonality	Monoclonal
Clone No.	s-RB6-8C5
Isotype	rat IgG2b
Applications	FC
Species Reactivity	mouse
Conjugates	FITC
Target Name	Ly-6G/Ly-6C
Formulation	0.2%BSA and 0.1%Proclin 300 Phosphate-buffered solution,PH7.2-7.4
Storage	Store at 4°C. DO NOT FREEZE. LIGHT SENSITIVE MATERIAL.

## Application Details

Test: 5 &mu;l/Test

Notice: This reagent has been pre-diluted for use at recommended volume per test in flow cytometry analysis. Typically, 1x 10<sup>6</sup> cells can be tested per experiment. Refer to the detailed scenario as you test.

## Images



Note: This product is for in vitro research use only