

KLOTTHO Antibody

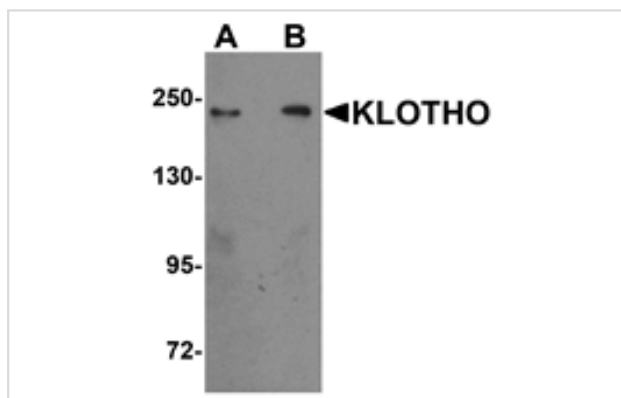
Catalog No: #25237

Orders: order@signalwayantibody.comSupport: tech@signalwayantibody.com

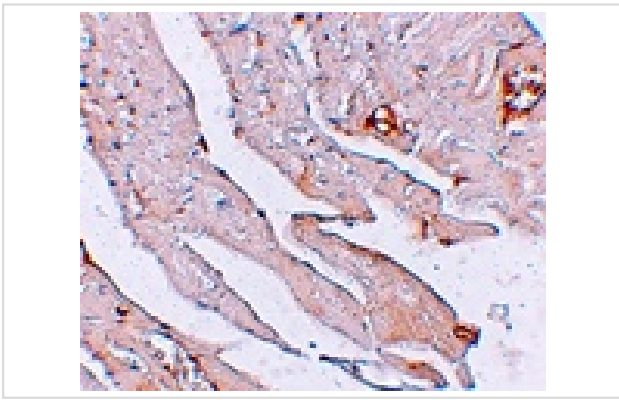
Description

Product Name	KLOTTHO Antibody
Host Species	Rabbit
Clonality	Polyclonal
Purification	Affinity chromatography purified via peptide column
Applications	ELISA WB IHC
Species Reactivity	Hu Ms Rt
Specificity	Three isoforms of KLOTTHO are known to exist.
Immunogen Type	Peptide
Immunogen Description	Raised against a 16 amino acid peptide near the center of human KLOTTHO.
Target Name	KLOTTHO
Other Names	KL, KLOTTHO
Accession No.	Swiss-Prot:Q9UEF7 Gene ID:9365
Uniprot	Q9UEF7
GeneID	9365;
Concentration	1mg/ml
Formulation	Supplied in PBS containing 0.02% sodium azide.
Storage	Can be stored at -20°C, stable for one year. As with all antibodies care should be taken to avoid repeated freeze thaw cycles. Antibodies should not be exposed to prolonged high temperatures.

Images



Western blot analysis of KLOTTHO in rat heart tissue lysate with KLOTTHO antibody at (A) 1 and (B) 2 ug/mL.



Immunohistochemistry of KLOTHO in mouse heart tissue with KLOTHO antibody at 2.5 ug/mL.

Background

KLOTHO is the systemic anti-aging hormone within the glycosidase1 superfamily. It encodes a type I membrane protein that is abundant in the kidney and brain. In mice, a deficiency in KLOTHO expression leads to various systemic phenotypes resembling human aging such as arteriosclerosis, osteoporosis, and skin atrophy together with growth retardation, short life-span and infertility. Transgenic mice overexpressing KLOTHO have an extended life span by inhibiting insulin/IGF1 signaling. KLOTHO is involved in the regulation of calcium/phosphorus homeostasis by inhibiting the synthesis of active vitamin D and identified as a potential tumor suppressor.

Note: This product is for in vitro research use only