

# PE-Cy7 anti-human CD56

Catalog No: #FC1380

Package Size: #FC1380-1 25Tests #FC1380-2 100Tests

Orders: [order@signalwayantibody.com](mailto:order@signalwayantibody.com)

Support: [tech@signalwayantibody.com](mailto:tech@signalwayantibody.com)

## Description

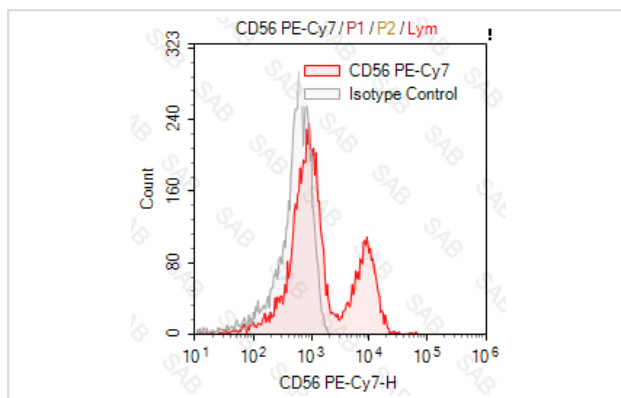
|                    |   |
|--------------------|---|
| Product Name       | PE-Cy7 anti-human CD56  |
| Brief Description  | mouse monoclonal antibody   |
| Host Species       | mouse   |
| Clonality          | Monoclonal  |
| Clone No.          | s-NCAM16.2  |
| Isotype            | mouse IgG1  |
| Applications       | FC  |
| Species Reactivity | human   |
| Conjugates         | PE-Cy7  |
| Target Name        | CD56  |
| Formulation        | 0.2%BSA and 0.1%Proclin 300 Phosphate-buffered solution,PH7.2-7.4 |
| Storage            | Store at 4°C. DO NOT FREEZE. LIGHT SENSITIVE MATERIAL.            |

## Application Details

Test: 5 µl/Test

Notice: This reagent has been pre-diluted for use at recommended volume per test in flow cytometry analysis. Typically, 1x 10<sup>6</sup> cells can be tested per experiment. Refer to the detailed scenario as you test.

## Images



Human peripheral blood lymphocytes stained with PE-Cy7 anti-human CD56 (colored histogram) or PE-Cy7 mouse IgG2b κ (gray histogram)

Note: This product is for in vitro research use only