

PE anti-mouse CD40

Catalog No: #FC1387

Package Size: #FC1387-1 25Tests #FC1387-2 100Tests

Orders: order@signalwayantibody.comSupport: tech@signalwayantibody.com

Description

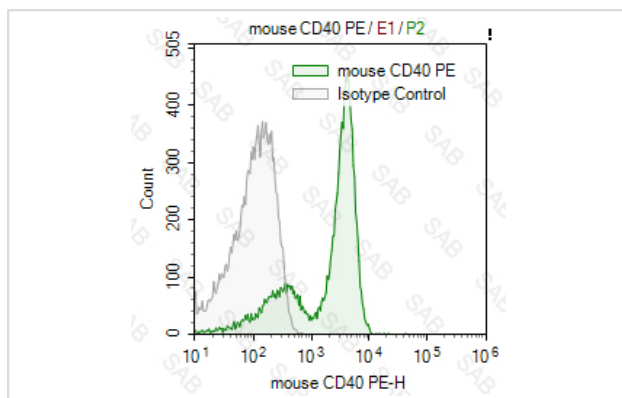
Product Name	PE anti-mouse CD40
Brief Description	rat monoclonal antibody
Host Species	rat
Clonality	Monoclonal
Clone No.	s-FGK45
Isotype	rat IgG2a
Applications	FC
Species Reactivity	mouse
Conjugates	PE
Target Name	CD40
Formulation	0.2%BSA and 0.1%Proclin 300 Phosphate-buffered solution,PH7.2-7.4
Storage	Store at 4°C. DO NOT FREEZE. LIGHT SENSITIVE MATERIAL.

Application Details

Test: 5 µl/Test

Notice: This reagent has been pre-diluted for use at recommended volume per test in flow cytometry analysis. Typically, 1x 10⁶ cells can be tested per experiment. Refer to the detailed scenario as you test.

Images



Note: This product is for in vitro research use only