

EDG-1 Polyclonal Antibody

Catalog No: #62015

Package Size: #62015-1 50ul #62015-2 100ul

Orders: order@signalwayantibody.comSupport: tech@signalwayantibody.com

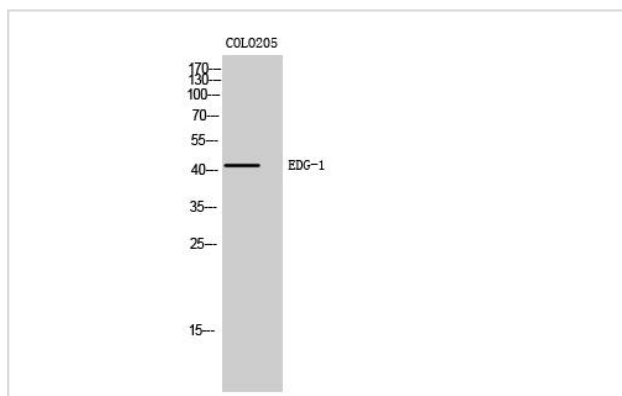
Description

Product Name	EDG-1 Polyclonal Antibody
Host Species	Rabbit
Clonality	Polyclonal
Isotype	IgG
Purification	The antibody was affinity-purified from rabbit antiserum by affinity-chromatography using epitope-specific immunogen.
Applications	WB;IHC;IF;ELISA
Species Reactivity	Human;Rat;Mouse
Specificity	EDG-1 Polyclonal Antibody detects endogenous levels of EDG-1 protein.
Immunogen Description	The antiserum was produced against synthesized peptide derived from human EDG1.
Target Name	S1PR1
Other Names	S1PR1;CHEDG1;EDG1;Sphingosine 1-phosphate receptor 1;S1P receptor 1;S1P1;Endothelial differentiation G-protein coupled receptor 1;Sphingosine 1-phosphate receptor Edg-1;S1P receptor Edg-1;CD antigen CD363
Uniprot	P21453
GeneID	1901
Calculated MW	43kD
Concentration	1 mg/ml
Formulation	Liquid in PBS containing 50% glycerol, 0.5% BSA and 0.02% sodium azide.
Storage	Store at -20°C/1 year

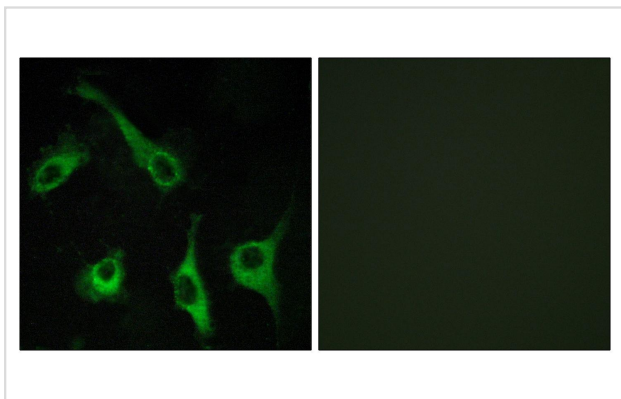
Application Details

WB 1:500 - 1:2000. IHC 1:100 - 1:300. IF 1:200 - 1:1000. ELISA: 1:20000

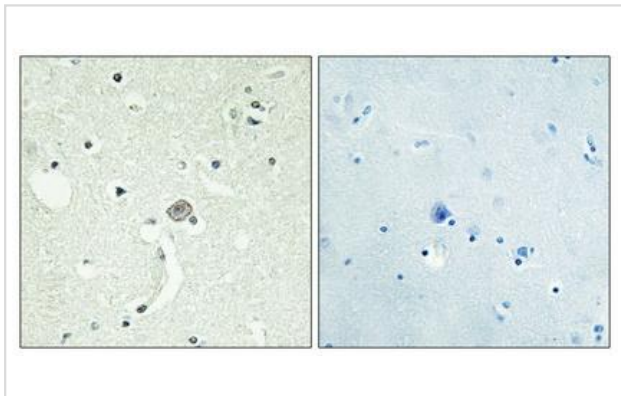
Images



Western Blot analysis of COLO205 cells using EDG-1 Polyclonal Antibody



Immunofluorescence analysis of COS7 cells, using EDG1 Antibody. The picture on the right is blocked with the synthesized peptide.



Immunohistochemical analysis of paraffin-embedded Human brain.

Note: This product is for in vitro research use only