

## SSBP2 Polyclonal Antibody

Catalog No: #62017

Package Size: #62017-1 50ul #62017-2 100ul

Orders: order@signalwayantibody.com

Support: tech@signalwayantibody.com

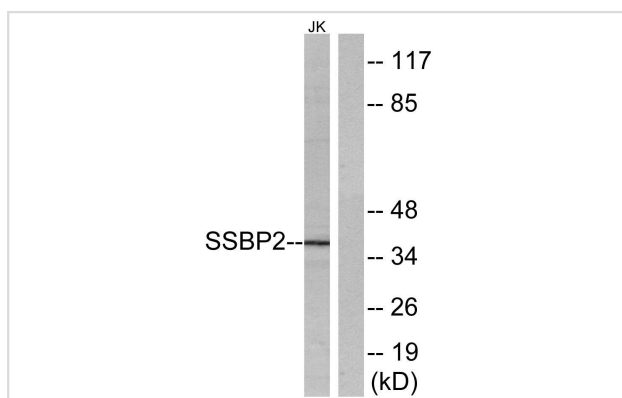
## Description

Product Name	SSBP2 Polyclonal Antibody
Host Species	Rabbit
Clonality	Polyclonal
Isotype	IgG
Purification	The antibody was affinity-purified from rabbit antiserum by affinity-chromatography using epitope-specific immunogen.
Applications	WB;IHC;IF;ELISA
Species Reactivity	Human;Mouse
Specificity	SSBP2 Polyclonal Antibody detects endogenous levels of SSBP2 protein.
Immunogen Description	The antiserum was produced against synthesized peptide derived from human SSBP2.
Target Name	SSBP2
Other Names	SSBP2;SSDP2;Single-stranded DNA-binding protein 2;Sequence-specific single-stranded-DNA-binding protein 2
Uniprot	P81877
GeneID	23635
Calculated MW	38kD
Concentration	1 mg/ml
Formulation	Liquid in PBS containing 50% glycerol, 0.5% BSA and 0.02% sodium azide.
Storage	Store at -20°C/1 year

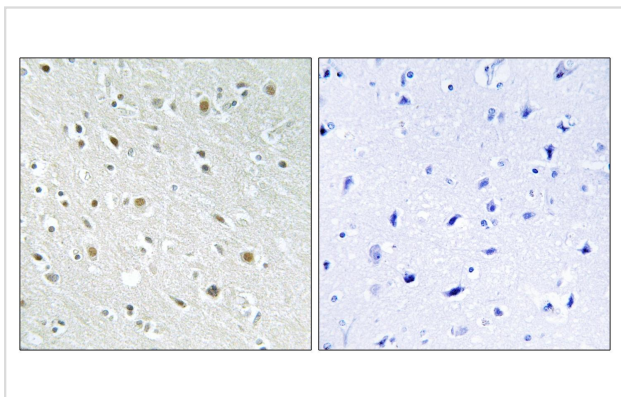
## Application Details

WB 1:500 - 1:2000. IHC 1:100 - 1:300. ELISA: 1:10000.. IF 1:50-200

## Images



Western blot analysis of lysates from Jurkat cells, using SSBP2 Antibody. The lane on the right is blocked with the synthesized peptide.



Immunohistochemistry analysis of paraffin-embedded human brain tissue, using SSBP2 Antibody. The picture on the right is blocked with the synthesized peptide.

---

Note: This product is for in vitro research use only