

S15A3 rabbit pAb

Catalog No: #62021

Package Size: #62021-1 50ul #62021-2 100ul

Orders: order@signalwayantibody.comSupport: tech@signalwayantibody.com

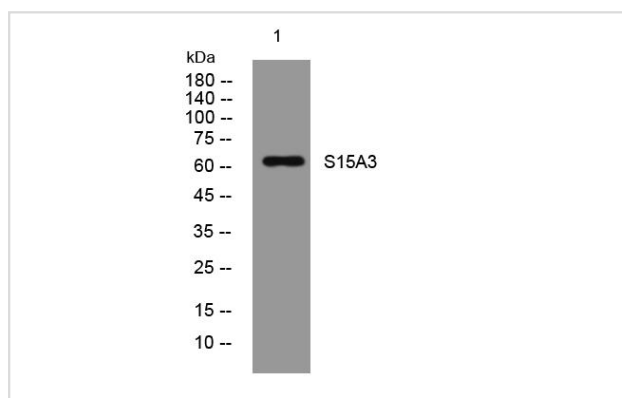
Description

Product Name	S15A3 rabbit pAb
Host Species	Rabbit
Clonality	Polyclonal
Isotype	IgG
Purification	The antibody was affinity-purified from rabbit antiserum by affinity-chromatography using epitope-specific immunogen.
Applications	WB
Species Reactivity	Human;Mouse;Rat
Specificity	This antibody detects endogenous levels of S15A3 at Human/Mouse/Rat
Immunogen Description	Synthesized peptide derived from human S15A3
Target Name	SLC15A3 OCTP PHT2 PTR3
Uniprot	Q8IY34
GeneID	51296
Calculated MW	64kD
Concentration	1 mg/ml
Formulation	Liquid in PBS containing 50% glycerol, 0.5% BSA and 0.02% sodium azide.
Storage	Store at -20°C/1 year

Application Details

WB 1 μ O 500-2000

Images



Western blot analysis of lysates from 293T cells, primary antibody was diluted at 1:1000, 4°over night

Note: This product is for in vitro research use only