

## FOLR2 Rabbit Polyclonal Antibody (N-term)

Catalog No: #62024

Package Size: #62024-1 50ul #62024-2 100ul

Orders: order@signalwayantibody.com

Support: tech@signalwayantibody.com

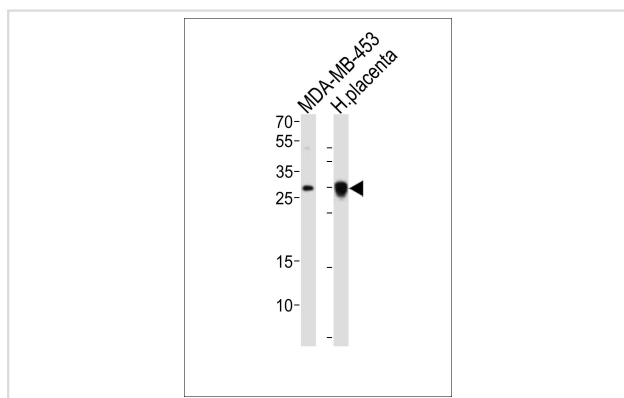
## Description

Product Name	FOLR2 Rabbit Polyclonal Antibody (N-term)
Host Species	Rabbit
Clonality	Polyclonal
Isotype	IgG
Applications	WB, IHC-P
Species Reactivity	Human, Mouse, Rat
Specificity	This FOLR2 antibody is generated from rabbits immunized with a KLH conjugated synthetic peptide between 18-46 amino acids of human FOLR2.
Other Names	Folate receptor beta, FR-beta, Folate receptor 2, Folate receptor, fetal/placental, Placental folate-binding protein, FBP, FOLR2
Uniprot	P14207
Calculated MW	29kDa
Formulation	Purified polyclonal antibody supplied in PBS with 0.09% (W/V) New type preservative N. This antibody is purified through a protein A column, followed by peptide affinity purification.
Storage	For long term storage store at -20°C in small aliquots to prevent freeze-thaw cycles.

## Application Details

WB 1:1000, IHC-P 1:100-500

## Images



Western blot analysis of lysates from MDA-MB-453 cell line, human placenta tissue lysate (from left to right), using FOLR2 Antibody (N-term) at 1:10000 dilution was used as the secondary antibody. Lysates at 20ug per lane.

Note: This product is for in vitro research use only