

SDS3 rabbit pAb

Catalog No: #48944

Package Size: #48944-1 50ul #48944-2 100ul

Orders: order@signalwayantibody.comSupport: tech@signalwayantibody.com

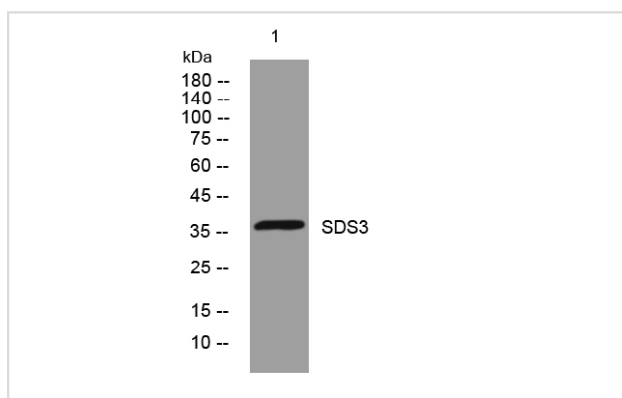
Description

| | |
|-----------------------|---|
| Product Name | SDS3 rabbit pAb |
| Host Species | Rabbit |
| Clonality | Polyclonal |
| Isotype | IgG |
| Purification | The antibody was affinity-purified from rabbit antiserum by affinity-chromatography using epitope-specific immunogen. |
| Applications | WB;IHC |
| Species Reactivity | Human;Mouse |
| Specificity | This antibody detects endogenous levels of SDS3 at Human/Mouse |
| Immunogen Description | Synthesized peptide derived from human SDS3 |
| Target Name | SUDS3 SAP45 SDS3 |
| Uniprot | Q9H7L9 |
| GeneID | 64426 |
| Calculated MW | 36kD |
| Concentration | 1 mg/ml |
| Formulation | Liquid in PBS containing 50% glycerol, 0.5% BSA and 0.02% sodium azide. |
| Storage | Store at -20°C/1 year |

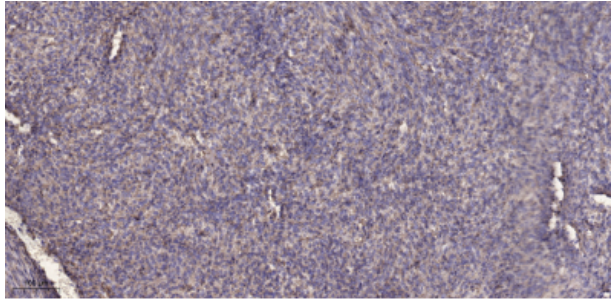
Application Details

WB 1:500-2000;IHC-p 1:50-300

Images



Western blot analysis of lysates from 293T cells, primary antibody was diluted at 1:1000, 4° over night



Immunohistochemical analysis of paraffin-embedded human Colon cancer.

Note: This product is for in vitro research use only