

LHPP rabbit pAb

Catalog No: #62010

Package Size: #62010-1 50ul #62010-2 100ul

Orders: order@signalwayantibody.comSupport: tech@signalwayantibody.com

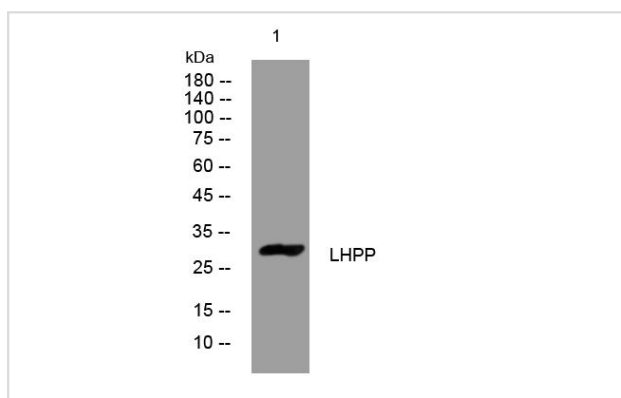
Description

Product Name	LHPP rabbit pAb
Host Species	Rabbit
Clonality	Polyclonal
Isotype	IgG
Purification	The antibody was affinity-purified from rabbit antiserum by affinity-chromatography using epitope-specific immunogen.
Applications	WB;IHC
Species Reactivity	Human;Mouse;Rat
Specificity	This antibody detects endogenous levels of LHPP at Human/Mouse/Rat
Immunogen Description	Synthesized peptide derived from human LHPP
Target Name	LHPP
Uniprot	Q9H008
GeneID	64077
Calculated MW	30kD
Concentration	1 mg/ml
Formulation	Liquid in PBS containing 50% glycerol, 0.5% BSA and 0.02% sodium azide.
Storage	Store at -20°C/1 year

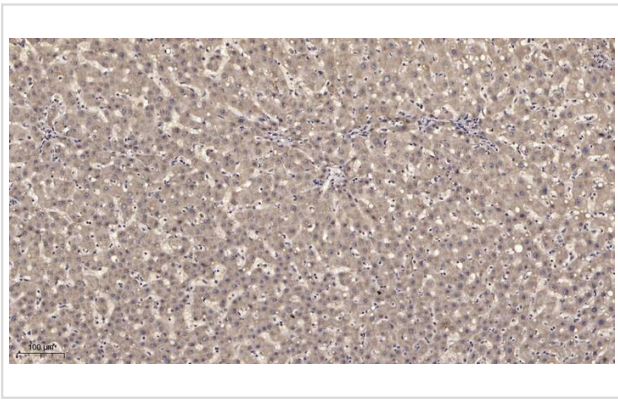
Application Details

WB 1:500-2000;IHC 1:50-300

Images



Western blot analysis of lysates from HuvEc cells, primary antibody was diluted at 1:1000, 4° over night



Immunohistochemical analysis of paraffin-embedded human liver cancer.

Note: This product is for in vitro research use only