

## GPRC5C Polyclonal Antibody

Catalog No: #62011

Package Size: #62011-1 50ul #62011-2 100ul

Orders: order@signalwayantibody.com

Support: tech@signalwayantibody.com

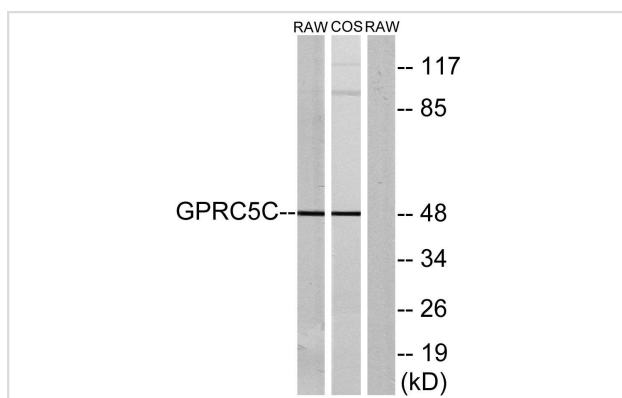
## Description

Product Name	GPRC5C Polyclonal Antibody
Host Species	Rabbit
Clonality	Polyclonal
Isotype	IgG
Purification	The antibody was affinity-purified from rabbit antiserum by affinity-chromatography using epitope-specific immunogen.
Applications	WB;IF;ELISA
Species Reactivity	Human;Mouse;Rat;Monkey
Specificity	GPRC5C Polyclonal Antibody detects endogenous levels of GPRC5C protein.
Immunogen Description	The antiserum was produced against synthesized peptide derived from human GPRC5C.
Target Name	GPRC5C
Other Names	GPRC5C;RAIG3;PSEC0087;G-protein coupled receptor family C group 5 member C;Retinoic acid-induced gene 3 protein;RAIG-3
Uniprot	Q9NQ84
GeneID	55890
Calculated MW	48kD
Concentration	1 mg/ml
Formulation	Liquid in PBS containing 50% glycerol, 0.5% BSA and 0.02% sodium azide.
Storage	Store at -20°C/1 year

## Application Details

WB 1:500 - 1:2000. IF 1:200 - 1:1000. ELISA: 1:5000.

## Images



Western blot analysis of lysates from RAW264.7 and COS7 cells, using GPRC5C Antibody. The lane on the right is blocked with the synthesized peptide.

---

Note: This product is for in vitro research use only