

XCT rabbit pAb

Catalog No: #62016

Package Size: #62016-1 50ul #62016-2 100ul

Orders: order@signalwayantibody.com

Support: tech@signalwayantibody.com

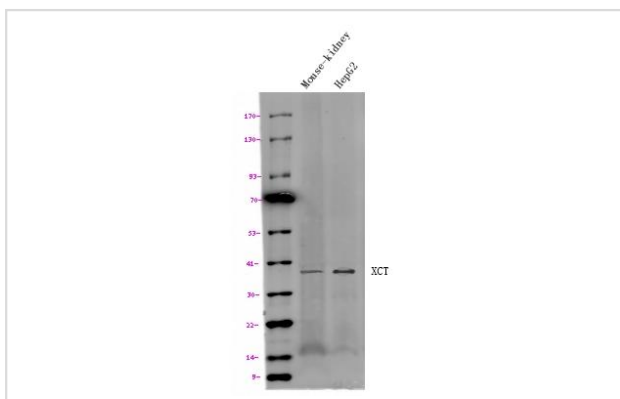
Description

Product Name	XCT rabbit pAb
Host Species	Rabbit
Clonality	Polyclonal
Isotype	IgG
Purification	The antibody was affinity-purified from rabbit antiserum by affinity-chromatography using epitope-specific immunogen.
Applications	IHC;WB
Species Reactivity	Human;Mouse
Specificity	This antibody detects endogenous levels of XCT at Human, Mouse
Immunogen Description	Synthesized peptide derived from human N-terminal XCT
Target Name	SLC7A11
Other Names	Cystine/glutamate transporter (Amino acid transport system xc-) (Calcium channel blocker resistance protein CCB1) (Solute carrier family 7 member 11) (xCT)
Uniprot	Q9UPY5
GeneID	23657
Calculated MW	35kD
Concentration	1 mg/ml
Formulation	Liquid in PBS containing 50% glycerol, and 0.02% sodium azide.
Storage	Store at -20°C/1 year

Application Details

WB 1:500-2000 IHC 1:50-200

Images



Western blot analysis of lysates from various cells, using primary antibody dilution at 1:1000.

Note: This product is for in vitro research use only