

SEMA3A Polyclonal Antibody

Catalog No: #62038

Package Size: #62038-1 50ul #62038-2 100ul

Orders: order@signalwayantibody.comSupport: tech@signalwayantibody.com

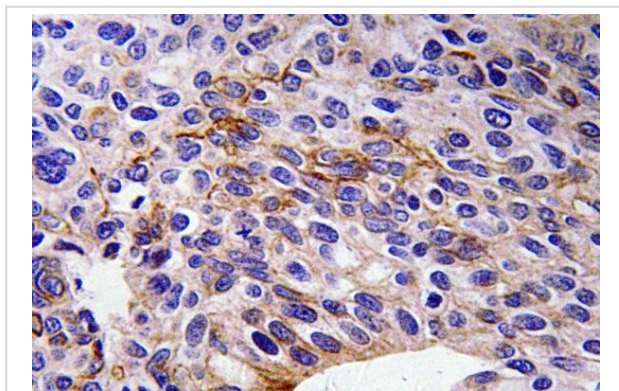
Description

Product Name	SEMA3A Polyclonal Antibody
Host Species	Rabbit
Clonality	Polyclonal
Isotype	IgG
Purification	The antibody was affinity-purified from rabbit antiserum by affinity-chromatography using epitope-specific immunogen.
Applications	IHC;IF;ELISA
Species Reactivity	Human;Mouse;Rat
Specificity	SEMA3A Polyclonal Antibody detects endogenous levels of SEMA3A protein.
Immunogen Description	The antiserum was produced against synthesized peptide derived from human SEMA3A.
Target Name	SEMA3A
Other Names	SEMA3A;SEMAD;Semaphorin-3A;Semaphorin III;Sema III
Uniprot	Q14563
GeneID	10371
Calculated MW	89kD
Concentration	1 mg/ml
Formulation	Liquid in PBS containing 50% glycerol, 0.5% BSA and 0.02% sodium azide.
Storage	Store at -20°C/1 year

Application Details

IHC 1:100 - 1:300. ELISA: 1:40000.. IF 1:50-200

Images



Immunohistochemistry analysis of SEMA3A antibody in paraffin-embedded human tonsil tissue.

Note: This product is for in vitro research use only