

SKI-1 Polyclonal Antibody

Catalog No: #62043

Package Size: #62043-1 50ul #62043-2 100ul

Orders: order@signalwayantibody.com

Support: tech@signalwayantibody.com

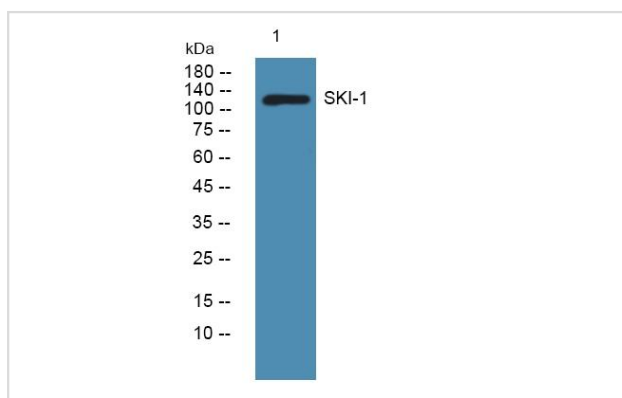
Description

Product Name	SKI-1 Polyclonal Antibody
Host Species	Rabbit
Clonality	Polyclonal
Isotype	IgG
Purification	The antibody was affinity-purified from rabbit antiserum by affinity-chromatography using epitope-specific immunogen.
Applications	WB;ELISA;IHC
Species Reactivity	Human;Mouse;Rat
Specificity	SKI-1 Polyclonal Antibody detects endogenous levels of SKI-1 protein.
Immunogen Description	Synthesized peptide derived from SKI-1
Target Name	MBTPS1
Other Names	MBTPS1;KIAA0091;S1P;SKI1;Membrane-bound transcription factor site-1 protease;Endopeptidase S1P;Subtilisin/kexin-isozyme 1;SKI-1
Uniprot	Q14703
GeneID	8720
Calculated MW	130kD
Concentration	1 mg/ml
Formulation	Liquid in PBS containing 50% glycerol, 0.5% BSA and 0.02% sodium azide.
Storage	Store at -20°C/1 year

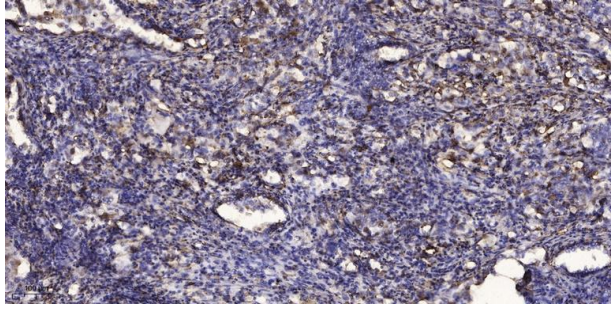
Application Details

WB 1:500-2000;IHC 1:50-300; ELISA 2000-20000

Images



Western blot analysis of lysates from HCT116 cells, primary antibody was diluted at 1:1000, 4° over night



Immunohistochemical analysis of paraffin-embedded human Squamous cell carcinoma of lung.

Note: This product is for in vitro research use only