

## COL12A1 Polyclonal Antibody

Catalog No: #62047

Package Size: #62047-1 50ul #62047-2 100ul

Orders: [order@signalwayantibody.com](mailto:order@signalwayantibody.com)Support: [tech@signalwayantibody.com](mailto:tech@signalwayantibody.com)

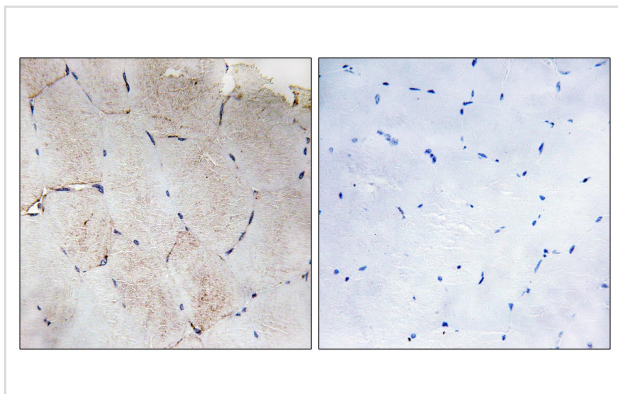
## Description

Product Name	COL12A1 Polyclonal Antibody
Host Species	Rabbit
Clonality	Polyclonal
Isotype	IgG
Purification	The antibody was affinity-purified from rabbit antiserum by affinity-chromatography using epitope-specific immunogen.
Applications	IHC IF ELISA
Species Reactivity	Human Rat Mouse
Specificity	COL12A1 Polyclonal Antibody detects endogenous levels of COL12A1 protein.
Immunogen Description	The antiserum was produced against synthesized peptide derived from human Collagen XII alpha1.
Target Name	COL12A1
Other Names	COL12A1;COL12A1L;Collagen alpha-1(XII) chain
Uniprot	Q99715
GeneID	1303
Calculated MW	333kD
Concentration	1 mg/ml
Formulation	Liquid in PBS containing 50% glycerol, 0.5% BSA and 0.02% sodium azide.
Storage	Store at -20°C/1 year

## Application Details

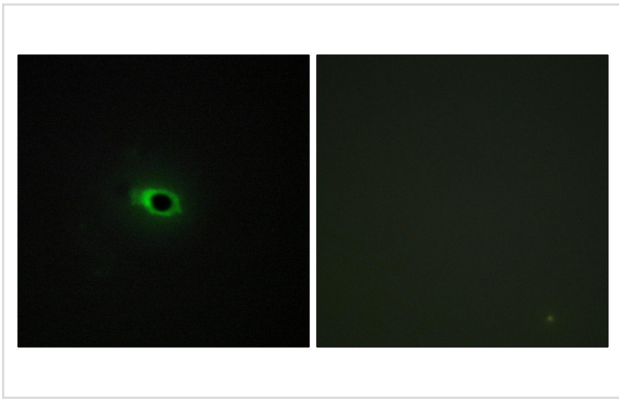
IHC 1:100 - 1:300. IF 1:200 - 1:1000. ELISA: 1:10000

## Images



Immunohistochemistry analysis of paraffin-embedded human skeletal muscle tissue, using Collagen XII alpha1 Antibody. The picture on the right is blocked with the synthesized peptide.

Immunofluorescence analysis of COS7 cells, using Collagen XII alpha1 Antibody. The picture on the right is blocked with the synthesized peptide.



---

Note: This product is for in vitro research use only