

MIPP Polyclonal Antibody

Catalog No: #62048

Package Size: #62048-1 50ul #62048-2 100ul

Orders: order@signalwayantibody.com

Support: tech@signalwayantibody.com

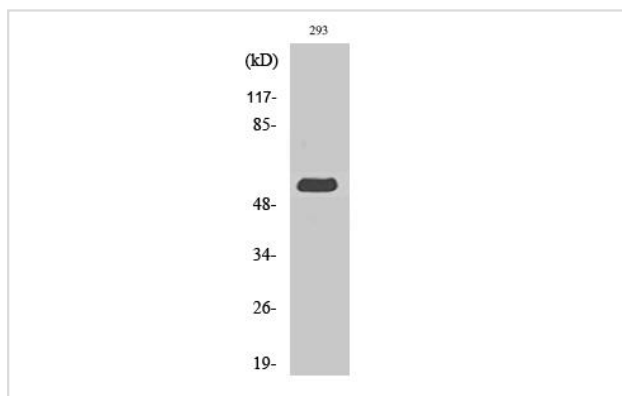
Description

Product Name	MIPP Polyclonal Antibody
Host Species	Rabbit
Clonality	Polyclonal
Isotype	IgG
Purification	The antibody was affinity-purified from rabbit antiserum by affinity-chromatography using epitope-specific immunogen.
Applications	WB IHC IF ELISA
Species Reactivity	Human Mouse Rat
Specificity	MIPP Polyclonal Antibody detects endogenous levels of MIPP protein.
Immunogen Description	The antiserum was produced against synthesized peptide derived from human MINPP1.
Target Name	MINPP1
Other Names	MINPP1;MIPP;Multiple inositol polyphosphate phosphatase 1;2;3-bisphosphoglycerate 3-phosphatase;2,3-BPG phosphatase;Inositol;1,3,4,5)-tetrakisphosphate 3-phosphatase;Ins(1,3,4,5)P(4) 3-phosphatase
Uniprot	Q9UNW1
GeneID	9562
Calculated MW	60kD
Concentration	1 mg/ml
Formulation	Liquid in PBS containing 50% glycerol, 0.5% BSA and 0.02% sodium azide.
Storage	Store at -20°C/1 year

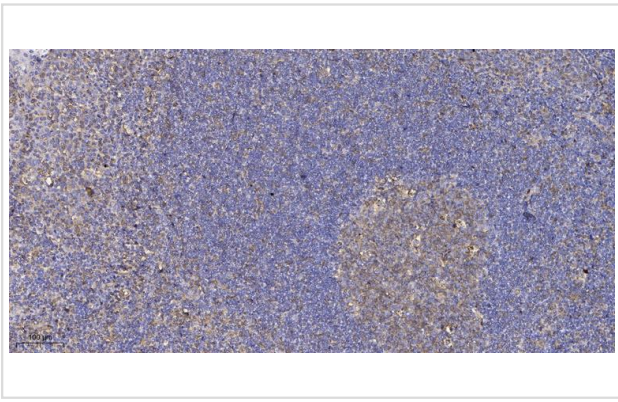
Application Details

WB 1:500 - 1:2000. IHC 1:100 - 1:300. ELISA: 1:10000.. IF 1:50-200

Images



Western Blot analysis of various cells using MIPP Polyclonal Antibody



Immunohistochemical analysis of paraffin-embedded human tonsil.

Note: This product is for in vitro research use only