

NUDT8 rabbit pAb

Catalog No: #62049

Package Size: #62049-1 50ul #62049-2 100ul

Orders: order@signalwayantibody.comSupport: tech@signalwayantibody.com

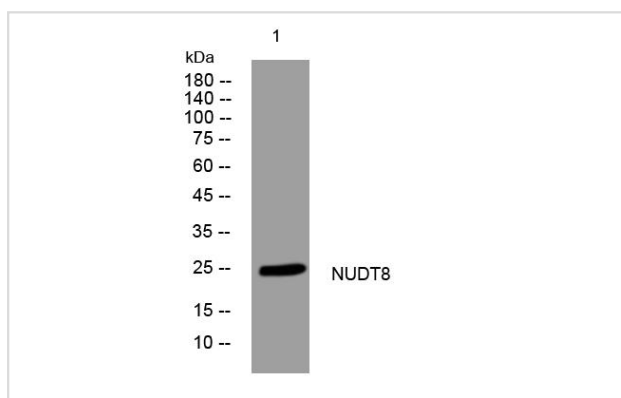
Description

| | |
|-----------------------|---|
| Product Name | NUDT8 rabbit pAb |
| Host Species | Rabbit |
| Clonality | Polyclonal |
| Isotype | IgG |
| Purification | The antibody was affinity-purified from rabbit antiserum by affinity-chromatography using epitope-specific immunogen. |
| Applications | WB |
| Species Reactivity | Human Mouse |
| Specificity | This antibody detects endogenous levels of NUDT8 at Human/Mouse |
| Immunogen Description | Synthesized peptide derived from human NUDT8 |
| Target Name | NUDT8 |
| Uniprot | Q8WV74 |
| GeneID | 254552 |
| Calculated MW | 26kD |
| Concentration | 1 mg/ml |
| Formulation | Liquid in PBS containing 50% glycerol, 0.5% BSA and 0.02% sodium azide. |
| Storage | Store at -20°C/1 year |

Application Details

WB 1 μ g 500-2000

Images



Western blot analysis of lysates from AD293 cells, primary antibody was diluted at 1:1000, 4° over night

Note: This product is for in vitro research use only