

## Rac1/CDC42 (Phospho Ser71) rabbit pAb

Catalog No: #62050

Package Size: #62050-1 50ul #62050-2 100ul

Orders: order@signalwayantibody.com

Support: tech@signalwayantibody.com

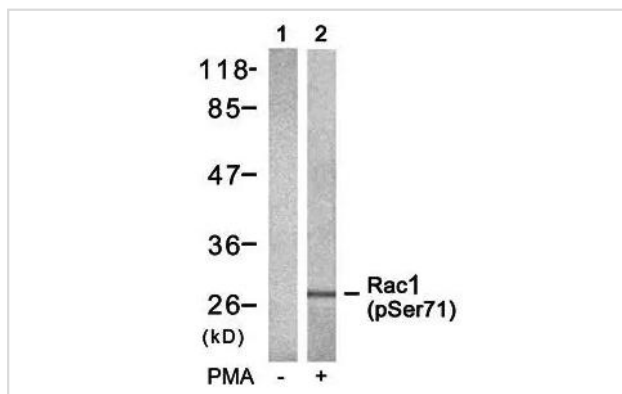
## Description

Product Name	Rac1/CDC42 (Phospho Ser71) rabbit pAb
Host Species	Rabbit
Clonality	Polyclonal
Isotype	IgG
Purification	The antibody was affinity-purified from rabbit serum by affinity-chromatography using specific immunogen.
Applications	WB ELISA IHC
Species Reactivity	Human Mouse Rat
Specificity	This antibody detects endogenous levels of Human,Mouse,Rat Rac1/CDC42 (Phospho Ser71)
Immunogen Description	Synthesized peptide derived from human Rac1/CDC42 (Phospho Ser71)
Target Name	RAC1 TC25 MIG5
Other Names	Ras-related C3 botulinum toxin substrate 1 (Cell migration-inducing gene 5 protein;Ras-like protein TC25;p21-Rac1)
Uniprot	P63000/P15153/P60763/P60953
GeneID	5879
Calculated MW	21kD
Concentration	1 mg/ml
Formulation	Liquid in PBS containing 50% glycerol, 0.5% BSA and 0.02% sodium azide.
Storage	Store at -20°C/1 year

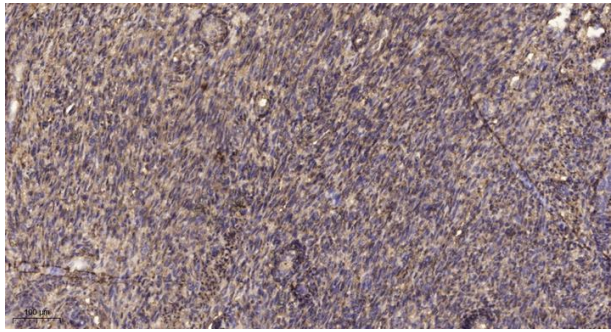
## Application Details

WB 1:500-2000;IHC 1:50-300; ELISA 2000-20000

## Images



Western blot analysis of Rac1(Phospho-Ser71) antibody in 293 cells lysates



Immunohistochemical analysis of paraffin-embedded human uterus.

---

Note: This product is for in vitro research use only