

## FOXP2 rabbit polyclonal antibody

Catalog No: #62053

Package Size: #62053-1 50ul #62053-2 100ul

Orders: [order@signalwayantibody.com](mailto:order@signalwayantibody.com)Support: [tech@signalwayantibody.com](mailto:tech@signalwayantibody.com)

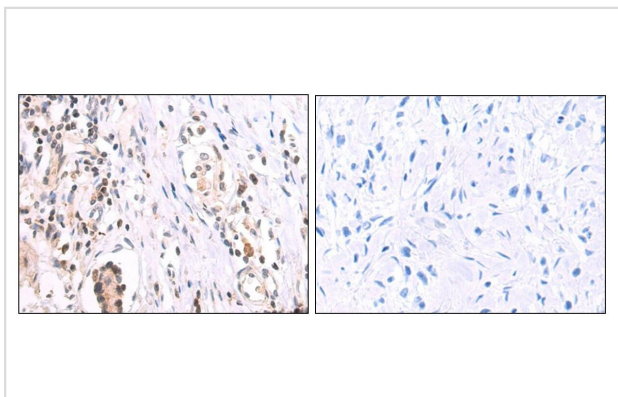
## Description

Product Name	FOXP2 rabbit polyclonal antibody
Host Species	Rabbit
Clonality	Polyclonal
Purification	Antigen affinity purification
Applications	ELISA WB IHC
Species Reactivity	Human Mouse Rat
Immunogen Description	Synthetic peptide of human FOXP2
Other Names	SPCH1; CAGH44; TNRC10
Uniprot	O15409
Calculated MW	80kDa
Concentration	0.8 mg/ml
Formulation	pH7.4 PBS, 0.05% NaN <sub>3</sub> , 40% Glycerol
Storage	Store at -20Λ C

## Application Details

WB=500-2000,IHC=50-100,ELISA=5000-10000

## Images



The image on the left is immunohistochemistry of paraffin-embedded Human gastric cancer tissue using FOXP2 Antibody at dilution 1/50, on the right is treated with synthetic peptide. (Original magnification:  $\times 200$ )

Note: This product is for in vitro research use only