

## MARCH3 Rabbit pAb

Catalog No: #62077

Package Size: #62077-1 50ul #62077-2 100ul

Orders: [order@signalwayantibody.com](mailto:order@signalwayantibody.com)Support: [tech@signalwayantibody.com](mailto:tech@signalwayantibody.com)

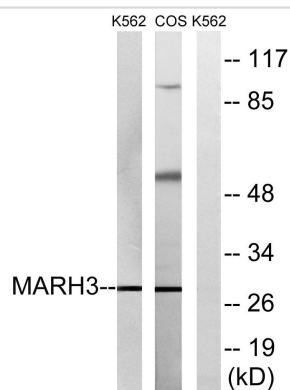
## Description

Product Name	MARCH3 Rabbit pAb
Host Species	Rabbit
Clonality	Polyclonal
Purification	The antibody was affinity-purified from rabbit antiserum by affinity-chromatography using epitope-specific immunogen.
Applications	WB;IHC;IF;ELISA
Species Reactivity	Human;Mouse;Rat;Monkey
Specificity	MARCH3 Polyclonal Antibody detects endogenous levels of 40605 protein.
Immunogen Description	The antiserum was produced against synthesized peptide derived from human MARCH3.
Target Name	3-Mar
Other Names	MARCH3 ; RNF173 ; E3 ubiquitin-protein ligase MARCH3 ; Membrane-associated RING finger protein 3 ; Membrane-associated RING-CH protein III ; MARCH-III ; RING finger protein 173
Uniprot	Q86UD3
GeneID	115123
Calculated MW	29kD
Concentration	1 mg/ml
Formulation	Liquid in PBS containing 50% glycerol, 0.5% BSA and 0.02% sodium azide.
Storage	Store at -20°C/1 year

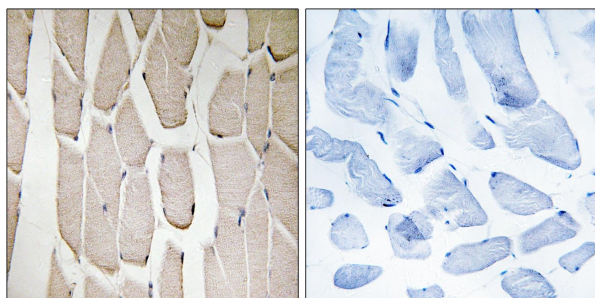
## Application Details

WB 1:500-1:2000; IHC 1:100-1:300; ELISA 1:40000; IF 1:50-200

## Images



Western blot analysis of lysates from K562 and COS7 cells, using MARCH3 Antibody. The lane on the right is blocked with the synthesized peptide.



Immunohistochemistry analysis of paraffin-embedded human heart tissue, using MARCH3 Antibody. The picture on the right is blocked with the synthesized peptide.

Note: This product is for in vitro research use only